

# Anti-Casein Kinase 2 beta Rabbit antibody



Catalog Number: 167646

## Product name

Rabbit IgG

Anti-Casein Kinase 2 beta Rabbit antibody

## Applications

## Specificity

WB, IHC-P, ICC/IF, FC

Human, Mouse, Rat

## Dilutions

## Antibody description

WB: 1/1000

Casein Kinase 2 beta Rabbit monoclonal antibody

IHC: 1/20

## Preparation

ICC/IF: 1/50

Antigen: A synthetic peptide of human Casein Kinase 2 beta

FC: 1/20

## Formulation

50nM Tris-Glycine(pH 7.4), 0.15M NaCl, 40%Glycerol, 0.01% sodium azide and 0.05% BSA

## Storage

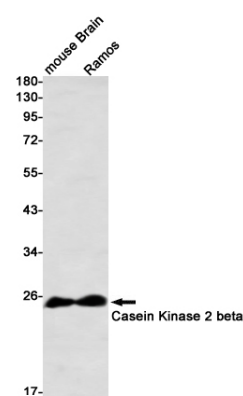
Store at 4°C short term. Store at -20°C long term. Avoid freeze / thaw cycle.

## Clonality

Monoclonal

## Ig Type

## Validations



Western blot detection of Casein Kinase 2 beta in mouse Brain,Ramos using Casein Kinase 2 beta Rabbit mAb(1:1000 diluted)