

# TOP2A antibody

Catalog Number: 116246

## Product name

TOP2A antibody

WB: 1:500-1:5000

IP: 1:500-1:5000

## Specificity

Human, Mouse; other species not tested.

IHC: 1:20-1:200

IF: 1:10-1:100

## Antibody description

TOP2A Rabbit Polyclonal antibody. Positive IF detected in A431 cells. Positive IHC detected in human tonsillitis tissue, human breast cancer tissue, human testis tissue. Positive WB detected in HeLa cells, mouse testis tissue. Positive IP detected in HeLa cells. Observed molecular weight by Western-blot: 170 kDa

## Preparation

This antibody was obtained by immunization of TOP2A recombinant protein (Accession Number: NM\_001067). Purification method: Antigen affinity purified.

## Formulation

PBS with 0.1% sodium azide and 50% glycerol pH 7.3.

## Storage

Store at -20°C. DO NOT ALIQUOT

## Clonality

Polyclonal

## Ig Type

Rabbit IgG

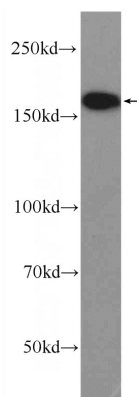
## Applications

ELISA, WB, IHC, IF, IP

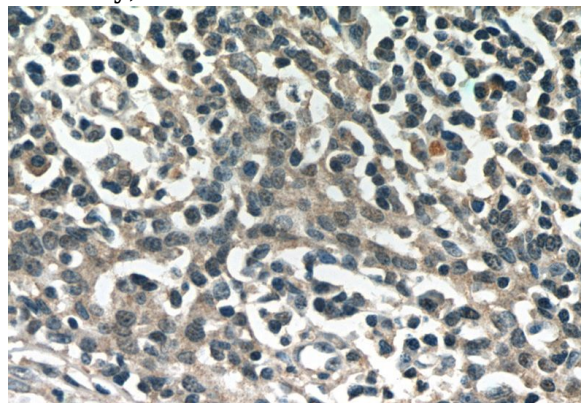
## Dilutions

Recommended Dilution:

## Validations



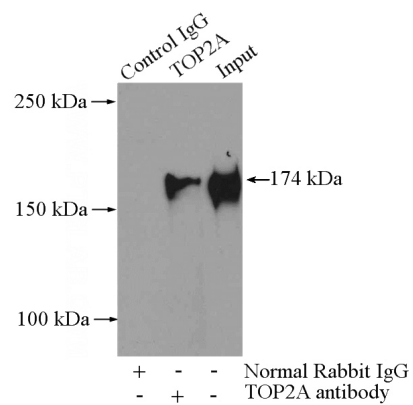
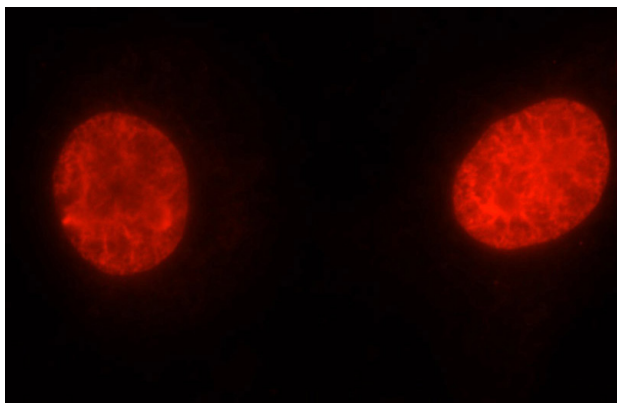
HeLa cells were subjected to SDS PAGE followed by western blot with Catalog No:116246(TOP2A Antibody) at dilution of 1:1000



Immunohistochemistry of paraffin-embedded human tonsillitis slide using Catalog No:116246(TOP2A Antibody) at dilution of 1:50

# TOP2A antibody

Catalog Number: 116246



Immunofluorescent analysis of A431 cells using Catalog No:116246(TOP2A Antibody) at dilution of 1:25 and Rhodamine-Goat anti-Rabbit IgG

IP Result of anti-TOP2A (IP:Catalog No:116246, 4ug; Detection:Catalog No:116246 1:1000) with HeLa cells lysate 2000ug.