

DIS3 antibody

Catalog Number: 109946

Product name

DIS3 antibody

IHC: 1:20-1:200

IF: 1:50-1:500

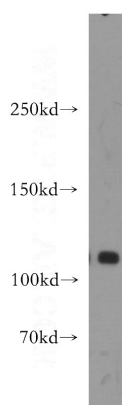
Specificity

Human, Mouse, Rat; other species not tested.

Validations

Antibody description

DIS3 Rabbit Polyclonal antibody. Positive IF detected in HeLa cells. Positive IHC detected in human ovary tumor tissue. Positive WB detected in HeLa cells, human brain tissue, mouse ovary tissue, mouse testis tissue. Observed molecular weight by Western-blot: 110 kDa



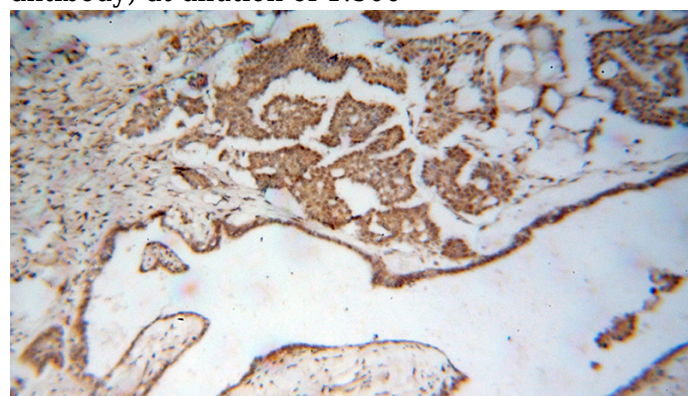
Preparation

This antibody was obtained by immunization of DIS3 recombinant protein (Accession Number: NM_014953). Purification method: Antigen affinity purified.

HeLa cells were subjected to SDS PAGE followed by western blot with Catalog No:109946(DIS3 antibody) at dilution of 1:500

Formulation

PBS with 0.02% sodium azide and 50% glycerol pH 7.3.



Storage

Store at -20°C. DO NOT ALIQUOT

Clonality

Polyclonal

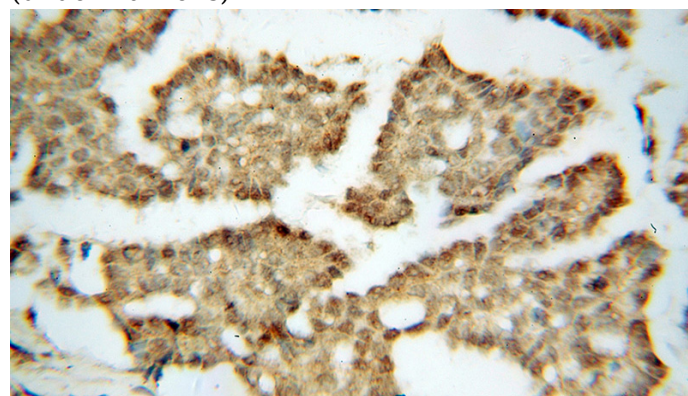
Immunohistochemical of paraffin-embedded human ovary tumor using Catalog No:109946(DIS3 antibody) at dilution of 1:100 (under 10x lens)

Ig Type

Rabbit IgG

Applications

ELISA, WB, IHC, IF



Dilutions

Recommended Dilution:

WB: 1:500-1:5000

Immunohistochemical of paraffin-embedded

DIS3 antibody



Catalog Number: 109946

human ovary tumor using Catalog

No:109946(DIS3 antibody) at dilution of 1:100
(under 40x lens)