

Anti-phospho-AMPK alpha 1 (Ser496) Rabbit antibody



Catalog Number: 167946

Product name

Anti-phospho-AMPK alpha 1 (Ser496) Rabbit antibody

Specificity

Human

Antibody description

phospho-AMPK alpha 1 (Ser496) Rabbit monoclonal antibody

Preparation

Antigen: A synthetic phosphopeptide corresponding to residues surrounding Ser496 of human AMPK alpha 1

Formulation

50nM Tris-Glycine(pH 7.4), 0.15M NaCl, 40%Glycerol, 0.01% sodium azide and 0.05% BSA

Storage

Store at 4°C short term. Store at -20°C long term. Avoid freeze / thaw cycle.

Clonality

Monoclonal

Ig Type

Rabbit IgG

Applications

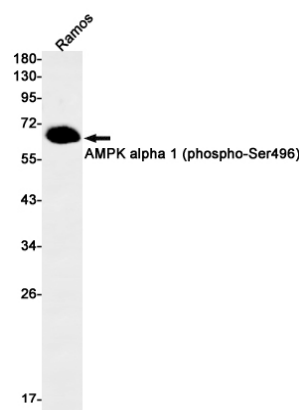
WB, ICC/IF, IP

Dilutions

WB: 1/10001/50

IP: 1/20

Validations



Western blot detection of AMPK alpha 1 (phospho-Ser496) in Ramos cell lysates using AMPK alpha 1 (phospho-Ser496) Rabbit mAb(1:1000 diluted). Predicted band size:64kDa. Observed band size:64kDa.