

Anti-BMP4 Rabbit antibody



Catalog Number: 166946

Product name

Anti-BMP4 Rabbit antibody

Specificity

Human

Antibody description

BMP4 Rabbit polyclonal antibody

Preparation

Antigen: A synthetic peptide of human BMP4

Formulation

Supplied in 50nM Tris-Glycine(pH 7.4), 0.15M NaCl, 40%Glycerol, 0.01% sodium azide and 0.05% BSA.

Storage

Store at -20°C. Stable for 12 months from date of receipt.

Clonality

Polyclonal

Ig Type

Rabbit IgG

Applications

WB, ICC/IF, FC, IP

Dilutions

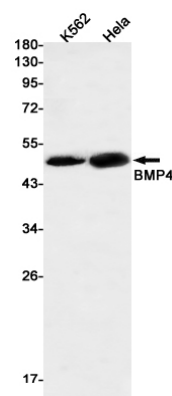
WB: 1/2000-1/10000

ICC/IF: 1/100

FC: 1/20-1/100

IP: 1/20

Validations



Western blot detection of BMP4 in K562, HeLa cell lysates using BMP4 Rabbit pAb(1:500 diluted). Predicted band size: 47kDa. Observed band size: 47kDa.