

# TERF1 antibody



Catalog Number: 115946

## Product name

TERF1 antibody

Recommended Dilution:

WB: 1:200-1:2000

## Specificity

Human; other species not tested.

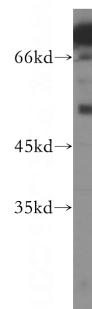
IP: 1:200-1:1000

IHC: 1:20-1:200

## Antibody description

TERF1 Rabbit Polyclonal antibody. Positive IHC detected in human gliomas tissue, human brain tissue, human heart tissue, human kidney tissue, human lung tissue, human ovary tissue, human placenta tissue, human spleen tissue, human testis tissue. Positive IP detected in HEK-293 cells. Positive WB detected in HEK-293 cells. Observed molecular weight by Western-blot: 50kd

## Validations



## Preparation

This antibody was obtained by immunization of TERF1 recombinant protein (Accession Number: NM\_003218). Purification method: Antigen affinity purified.

HEK-293 cells were subjected to SDS PAGE followed by western blot with Catalog No:115946(TERF1 antibody) at dilution of 1:300

## Formulation

PBS with 0.1% sodium azide and 50% glycerol pH 7.3.

## Storage

Store at -20°C. DO NOT ALIQUOT

## Clonality

Polyclonal

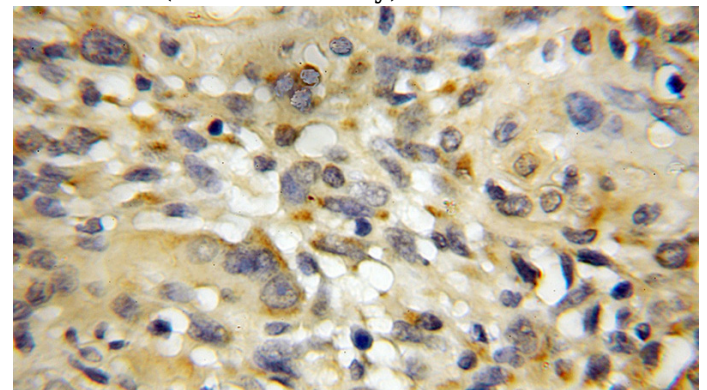
## Ig Type

Rabbit IgG

## Applications

ELISA, WB, IHC, IP

## Dilutions

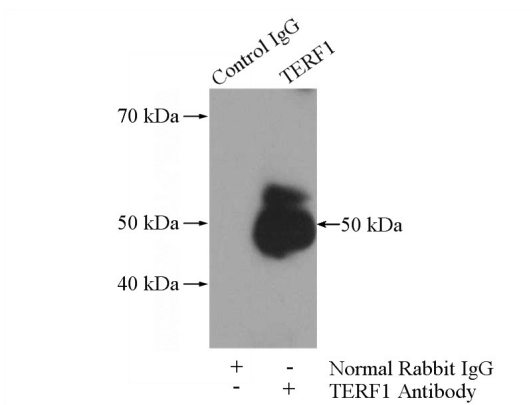


Immunohistochemical of paraffin-embedded human gliomas using Catalog No:115946(TERF1 antibody) at dilution of 1:50 (under 10x lens)

# TERF1 antibody

Catalog Number: 115946

---



IP Result of anti-TERF1 (IP:Catalog No:115946, 4ug; Detection:Catalog No:115946 1:300) with HEK-293 cells lysate 2000ug.