

P2RY13 antibody



Catalog Number: 113546

Product name

P2RY13 antibody

Specificity

Human, Mouse; other species not tested.

Antibody description

P2RY13 Rabbit Polyclonal antibody. Positive WB detected in HeLa cells, HepG2 cells. Positive FC detected in HeLa cells. Positive IHC detected in human small intestine tissue, mouse brain tissue. Observed molecular weight by Western-blot: 45 kDa

Preparation

This antibody was obtained by immunization of P2RY13 recombinant protein (Accession Number: NM_023914). Purification method: Antigen affinity purified.

Formulation

PBS with 0.1% sodium azide and 50% glycerol pH 7.3.

Storage

Store at -20°C. DO NOT ALIQUOT

Clonality

Polyclonal

Ig Type

Rabbit IgG

Applications

ELISA, WB, IHC, FC

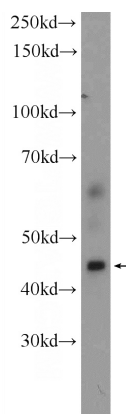
Dilutions

Recommended Dilution:

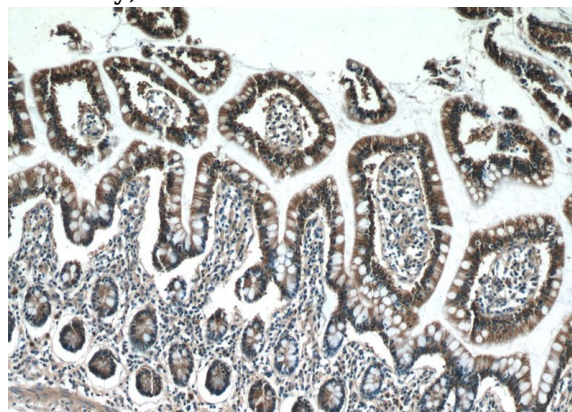
WB: 1:200-1:1000

IHC: 1:20-1:200

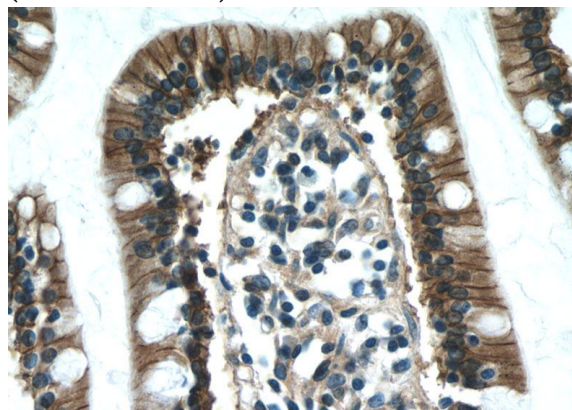
Validations



HeLa cells were subjected to SDS PAGE followed by western blot with Catalog No:113546(P2RY13 Antibody) at dilution of 1:300



Immunohistochemistry of paraffin-embedded human small intestine tissue slide using Catalog No:113546(P2RY13 Antibody) at dilution of 1:50 (under 10x lens)



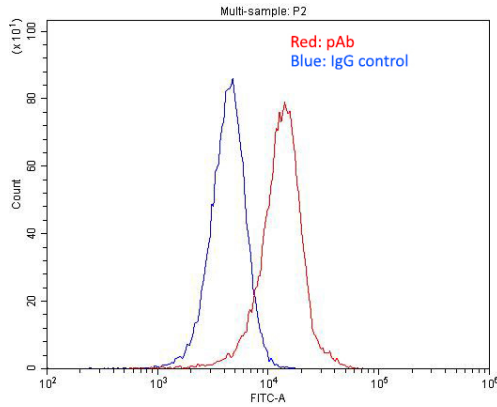
Immunohistochemistry of paraffin-embedded human small intestine tissue slide using Catalog

P2RY13 antibody



Catalog Number: 113546

No:113546(P2RY13 Antibody) at dilution of 1:50
(under 40x lens)



1X10⁶ HeLa cells were stained with .2ug P2RY13 antibody (Catalog No:113546, red) and control antibody (blue). Fixed with 4% PFA blocked with 3% BSA (30 min). Alexa Fluor 488-conjugated AffiniPure Goat Anti-Rabbit IgG(H+L) with dilution 1:1500.