

HSD17B2 antibody



Catalog Number: 111546

Product name

HSD17B2 antibody

IHC: 1:20-1:200

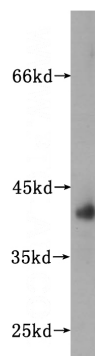
Specificity

Human; other species not tested.

Validations

Antibody description

HSD17B2 Rabbit Polyclonal antibody. Positive IHC detected in human ovary tumor tissue. Positive WB detected in human liver tissue, MCF7 cells. Observed molecular weight by Western-blot: 35-40 kDa



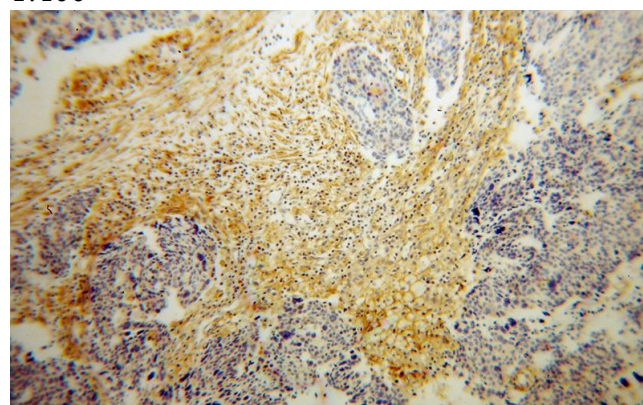
Preparation

This antibody was obtained by immunization of HSD17B2 recombinant protein (Accession Number: NM_002153). Purification method: Antigen affinity purified.

human liver tissue were subjected to SDS PAGE followed by western blot with Catalog No:111546(HSD17B2 antibody) at dilution of 1:400

Formulation

PBS with 0.1% sodium azide and 50% glycerol pH 7.3.



Storage

Store at -20°C. DO NOT ALIQUOT

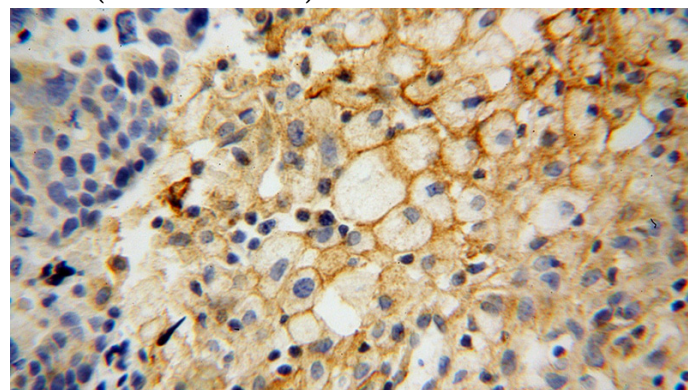
Clonality

Polyclonal

Immunohistochemical of paraffin-embedded human ovary tumor using Catalog No:111546(HSD17B2 antibody) at dilution of 1:100 (under 10x lens)

Ig Type

Rabbit IgG



Applications

ELISA, WB, IHC

Dilutions

Recommended Dilution:

WB: 1:200-1:2000

Immunohistochemical of paraffin-embedded human ovary tumor using Catalog

HSD17B2 antibody



Catalog Number: 111546

No:111546(HSD17B2 antibody) at dilution of 1:100 (under 40x lens)