

# Anti-Phospho-AKT (Ser473) Rabbit antibody



Catalog Number: 167146

## Product name

Anti-Phospho-AKT (Ser473) Rabbit antibody

## Specificity

Human, Mouse, Rat

## Antibody description

Phospho-AKT (Ser473) Rabbit polyclonal antibody

## Preparation

Antigen: Peptide sequence around phosphorylation site of serine 473 (Q-F-S(p)-Y-S) derived from Human Akt.

## Formulation

Supplied at 1.0mg/mL in phosphate buffered saline (without Mg<sup>2+</sup> and Ca<sup>2+</sup>), pH 7.4, 150mM NaCl, 0.02% sodium azide and 50% glycerol.

## Storage

Store at 4°C short term. Store at -20°C long term. Avoid freeze / thaw cycle.

## Clonality

Polyclonal

## Ig Type

Rabbit IgG

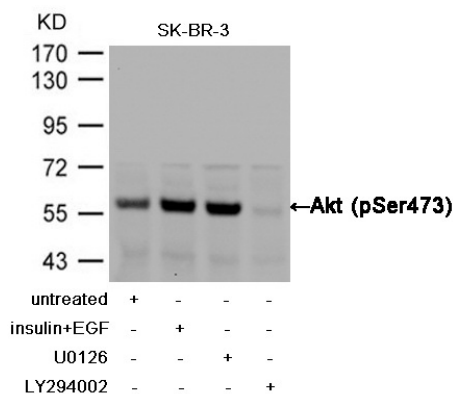
## Applications

WB, IHC-P

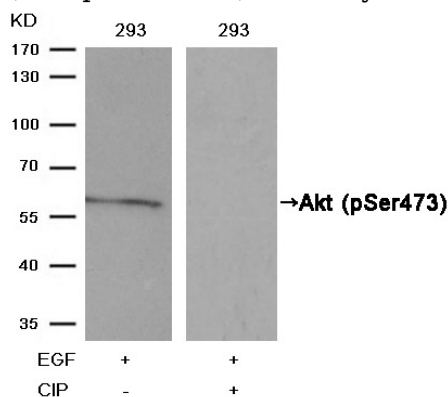
## Dilutions

WB:1/500-1/1000IHC:1/50-1/100

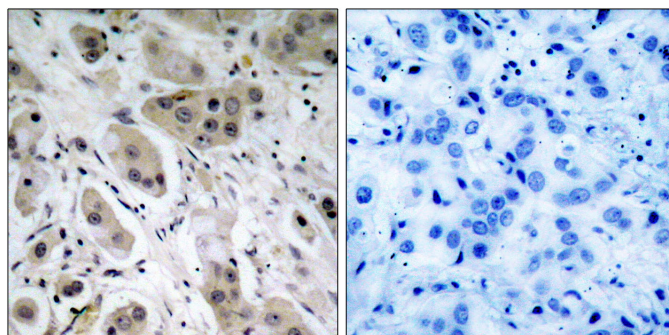
## Validations



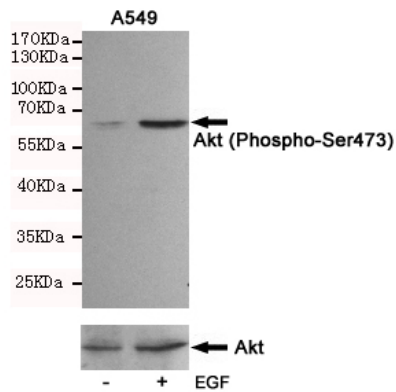
Western blot analysis of extracts from SK-BR-3 cells, treated with insulin and EGF, and pretreated with U0126 and LY294002 cells using Akt (Phospho-Ser473) Antibody .



Western blot analysis of extracts from 293 cells, treated with EGF or calf intestinal phosphatase (CIP), using Akt (Phospho-Ser473) Antibody .



Immunohistochemical analysis of paraffin-embedded human breast carcinoma tissue using Akt (Phospho-Ser473) Antibody (left) or the same antibody preincubated with blocking peptide



Mouse mAb (200323, lower).

