

# Human ASAM / CLMP (His Tag) recombinant protein



Catalog Number: 502146

## General Information

### Gene Name Synonym

Adipocyte adhesion molecule; Coxsackie- and adenovirus receptor-like membrane protein

### Protein Construction

A DNA sequence encoding the extracellular domain of human ASAM (NP\_079045.1) precursor (Met 1-Met 233) was expressed with a C-terminal polyhistidine tag.

### Organism

Human

### Expression Host

Human Cells

## QC Testing

### Activity

Measured by the ability of the immobilized protein to support the adhesion of the HUVEC human umbilical vein endothelial cell line. When 4 x 10E4 cells/well are added to human ASAM coated plates (30 µg/ml, 100 µl/well), approximately > 40 % will adhere after one hour at 37 °C.

### Purity

> 97 % as determined by SDS-PAGE

### Endotoxin

< 1.0 EU per µg of the protein as determined by the LAL method

### Stability

Samples are stable for up to twelve months from date of receipt at -70°C

### Predicted N terminal

Gly 18

### Molecular Mass

The secreted recombinant human ASAM comprises 227 amino acids and predicts a molecular mass of 25.8 kDa. It migrates as an approximately 32-35 kDa band in SDS-PAGE under reducing conditions.

### Formulation

Lyophilized from sterile PBS, pH 7.4

1. 5 % trehalose and mannitol are added as protectants before lyophilization.

2. Please contact us for any concerns or special requirements.

## Usage Guide

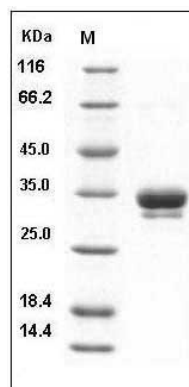
### Storage

Store it under sterile conditions at -20°C to -80°C. It is recommended that the protein be aliquoted for optimal storage. Avoid repeated freeze-thaw cycles.

### Reconstitution

Adding sterile water, prepare a stock solution of 0.25 mg/ml. Concentration is measured by UV-Vis.

### SDS-PAGE



Human ASAM / CLMP Protein (His Tag) SDS-PAGE