

Human EphB3/HEK2/Eph Receptor B3 (aa 585-998, His & GST Tag) recombinant protein



Catalog Number: 501146

General Information

Gene Name Synonym

EPH-like tyrosine kinase 2; Embryonic kinase 2; Tyrosine-protein kinase TYRO6

Protein Construction

A DNA sequence encoding the human EPHB3 (P54753) (Gln585-Val998) was fused with the N-terminal polyhistidine-tagged GST tag at the N-terminus.

Organism

Human

Expression Host

Baculovirus-Insect Cells

QC Testing

Activity

The specific activity was determined to be 90 nmol/min/mg using Poly(Glu:Tyr) 4:1 as substrate.

Purity

> 90 % as determined by SDS-PAGE

Endotoxin

< 1.0 EU per μ g of the protein as determined by the LAL method

Stability

Samples are stable for up to twelve months from date of receipt at -70°C

Predicted N terminal

Met

Molecular Mass

The recombinant human EPHB3 /GST chimera consists of 651 amino acids and has a calculated molecular mass of 74.7 kDa. The recombinant protein migrates as an approximately 64 kDa band in SDS-PAGE under reducing conditions.

Formulation

Supplied as sterile 20mM Tris, 500mM NaCl, pH 7.4, 10% gly

1. 5 % trehalose and mannitol are added as protectants before lyophilization.

2. Please contact us for any concerns or special requirements.

Usage Guide

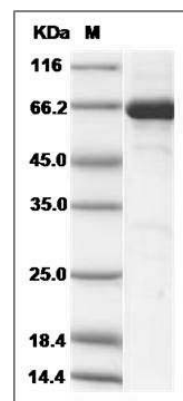
Storage

Store it under sterile conditions at -20°C to -80°C. It is recommended that the protein be aliquoted for optimal storage. Avoid repeated freeze-thaw cycles.

Reconstitution

Adding sterile water, prepare a stock solution of 0.25 mg/ml. Concentration is measured by UV-Vis.

SDS-PAGE



Human EphB3 / HEK2 Protein (aa 585-998, His & GST Tag) SDS-PAGE