

Anti-Smad3 Rabbit antibody



Catalog Number: 168846

Product name

Anti-Smad3 Rabbit antibody

Specificity

Human, Mouse, Rat

Antibody description

Smad3 Rabbit monoclonal antibody

Preparation

Antigen: A synthetic peptide of human Smad3

Formulation

Supplied in 50nM Tris-Glycine(pH 7.4), 0.15M NaCl, 40%Glycerol, 0.01% sodium azide and 0.05% BSA.

Storage

Store at 4°C short term. Aliquot and store at -20°C long term. Avoid freeze / thaw cycle.

Clonality

Monoclonal

Ig Type

Rabbit IgG

Applications

WB, IHC-P, ICC/IF, FC

Dilutions

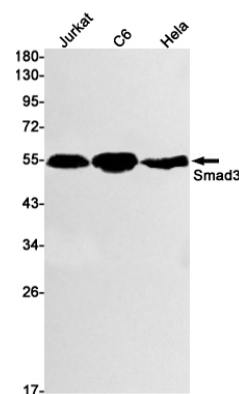
1:2000

1:20-1:500

1:100

1:50

Validations



Western blot detection of Smad3 in Jurkat, C6, HeLa cell lysates using Smad3 Rabbit mAb(1:1000 diluted). Predicted band size: 48kDa. Observed band size: 52kDa.