

# Anti-GST3/GST pi Rabbit antibody



Catalog Number: 166846

## Product name

Anti-GST3/GST pi Rabbit antibody

## Specificity

Human, Mouse, Rat

## Antibody description

GST3/GST pi Rabbit polyclonal antibody

## Preparation

Antigen: A synthetic peptide of human GST3/GST pi

## Formulation

Supplied in 50nM Tris-Glycine(pH 7.4), 0.15M NaCl, 40%Glycerol, 0.01% sodium azide and 0.05% BSA.

## Storage

Store at -20°C. Stable for 12 months from date of receipt.

## Clonality

Polyclonal

## Ig Type

Rabbit IgG

## Applications

WB, IHC-P, ICC/IF

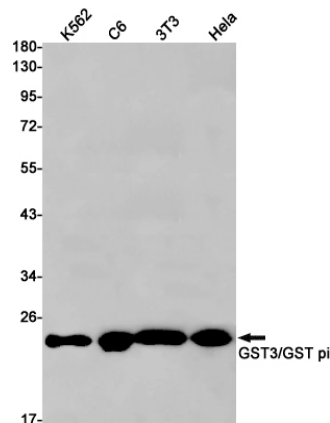
## Dilutions

WB: 1/1000-1/2000

IHC: 1/50-1/200

ICC/IF: 1/20-1/100

## Validations



Western blot detection of GST3/GST pi in K562,C6,3T3,Hela cell lysates using GST3/GST pi Rabbit pAb(1:1000 diluted).Predicted band size:23kDa.Observed band size:23kDa.