

MRPS18B antibody



Catalog Number: 112846

Product name

MRPS18B antibody

Recommended Dilution:

WB: 1:200-1:2000

Specificity

Human, Mouse, Rat; other species not tested.

IP: 1:500-1:5000

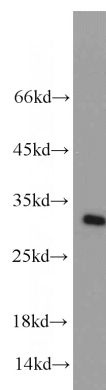
IHC: 1:20-1:200

Antibody description

MRPS18B Rabbit Polyclonal antibody. Positive IP detected in HeLa cells. Positive WB detected in HeLa cells, HepG2 cells, human liver tissue, MCF7 cells, mouse liver tissue, rat heart tissue. Positive IF detected in HepG2 cells. Positive IHC detected in human breast cancer tissue, human liver tissue. Observed molecular weight by Western-blot: 29 kDa

IF: 1:20-1:200

Validations



Preparation

This antibody was obtained by immunization of MRPS18B recombinant protein (Accession Number: NM_014046). Purification method: Antigen affinity purified.

HeLa cells were subjected to SDS PAGE followed by western blot with Catalog No:112846(MRPS18B antibody) at dilution of 1:500

Formulation

PBS with 0.02% sodium azide and 50% glycerol pH 7.3.

Storage

Store at -20°C. DO NOT ALIQUOT

Clonality

Polyclonal

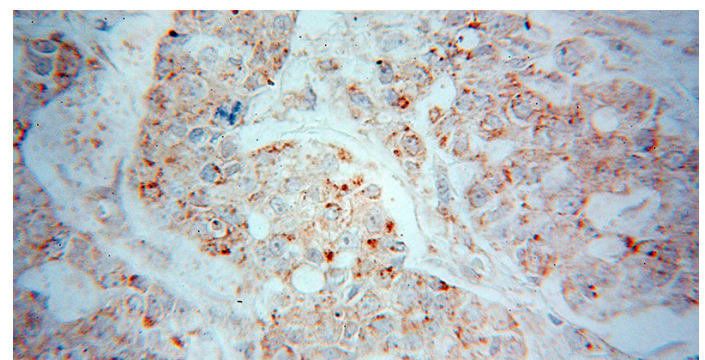
Ig Type

Rabbit IgG

Applications

ELISA, WB, IHC, IF, IP

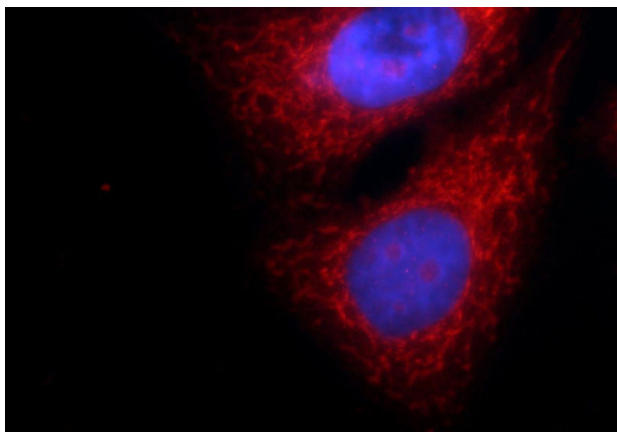
Dilutions



Immunohistochemical of paraffin-embedded human breast cancer using Catalog No:112846(MRPS18B antibody) at dilution of 1:50 (under 40x lens)

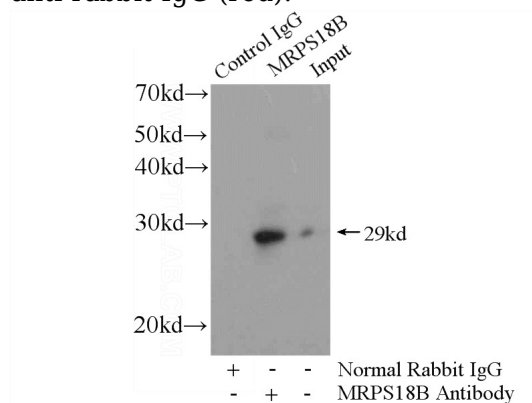
MRPS18B antibody

Catalog Number: 112846



Immunofluorescent analysis of HepG2 cells using Catalog No:112846(MRPS18B Antibody) at dilution of 1:50 and Rhodamine-labeled goat

anti-rabbit IgG (red).



IP Result of anti-MRPS18B (IP:Catalog No:112846, 4ug; Detection:Catalog No:112846 1:1000) with HeLa cells lysate 2800ug.