

# Complement factor B antibody



Catalog Number: 109446

## Product name

Complement factor B antibody

## Specificity

Human; other species not tested.

## Antibody description

Complement factor B Rabbit Polyclonal antibody. Positive IHC detected in human liver tissue. Positive WB detected in human serum tissue, human blood tissue. Observed molecular weight by Western-blot: 93-100 kDa, 60-69 kDa

## Preparation

This antibody was obtained by immunization of Complement factor B recombinant protein (Accession Number: NM\_001710). Purification method: Antigen affinity purified.

## Formulation

PBS with 0.1% sodium azide and 50% glycerol pH 7.3.

## Storage

Store at -20°C. DO NOT ALIQUOT

## Clonality

Polyclonal

## Ig Type

Rabbit IgG

## Applications

ELISA, WB, IHC

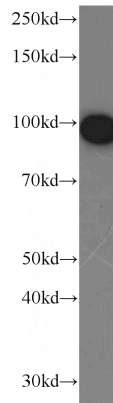
## Dilutions

Recommended Dilution:

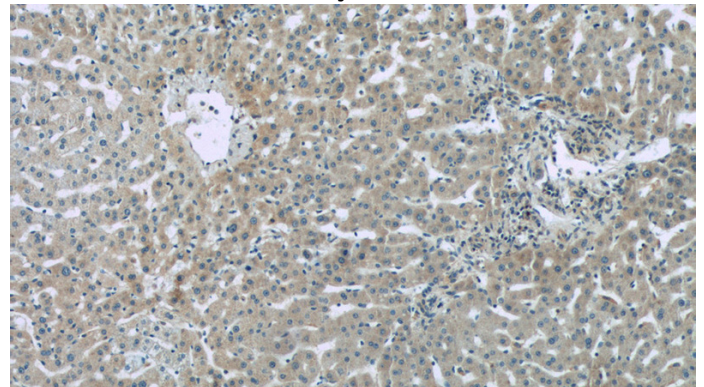
WB: 1:200-1:2000

IHC: 1:20-1:200

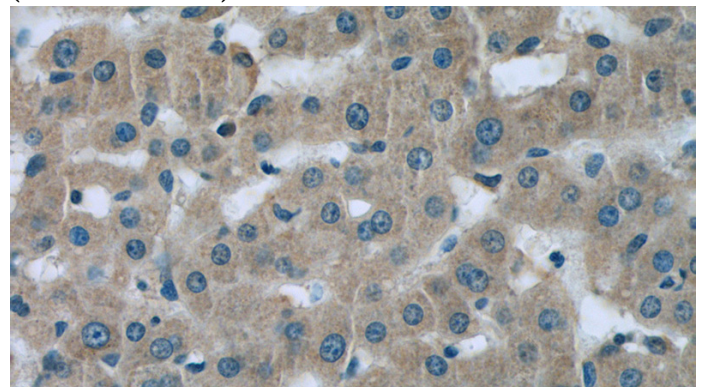
## Validations



human serum tissue were subjected to SDS PAGE followed by western blot with Catalog No:109446(CFB antibody) at dilution of 1:800



Immunohistochemistry of paraffin-embedded human liver tissue slide using Catalog No:109446(CFB Antibody) at dilution of 1:50 (under 10x lens)



Immunohistochemistry of paraffin-embedded human liver tissue slide using Catalog No:109446(CFB Antibody) at dilution of 1:50

# Complement factor B antibody



Catalog Number: 109446

---

(under 40x lens)