

Human RGMA/RGM (His tag) recombinant protein



Catalog Number: 518446

General Information

Gene Name Synonym

Repulsive guidance molecule A \square RGM domain family member A \square RGM

Protein Construction

A DNA sequence encoding the Human RGMA/RGM Pro169-Gly422 is expressed with a 6His tag at the N-terminus.

Organism

Human

Expression Host

E. coli

QC Testing

Purity

>95% as determined by SDS-PAGE.

Endotoxin

<1.0 EU per μ g protein as determined by the LAL

method.

Stability

Store for up to 6 months at -20°C

Formulation

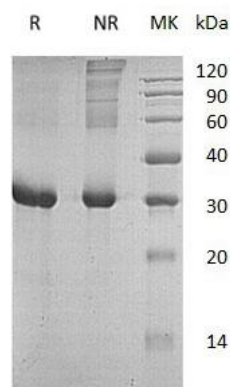
Supplied as a 0.2 μ m filtered solution of 20mM Tris,150mM NaCl,pH8.0.

Usage Guide

Storage

Store at <-20°C, minimize freeze-thaw cycles.

SDS-PAGE



Human RGMA/RGM (His tag) recombinant protein