

Anti-GP5 antibody



Catalog Number: 176446

Product name

Anti-GP5 antibody

Specificity

Human, Mouse, Rat

Antibody description

Rabbit polyclonal antibody to GP5

Preparation

This antigen of this antibody was the antiserum was produced against synthesized peptide derived from the internal region of human gp5. aa range:331-380

Formulation

Liquid, Liquid in PBS containing 50% glycerol, 0.5% BSA and 0.02% sodium azide.

Storage

Store at +4°C after thawing. Aliquot store at -20°C or -80°C. Avoid repeated freeze / thaw cycles.

Clonality

Polyclonal

Ig Type

Rabbit IgG

Applications

WB, IHC-P

Dilutions

WB: 1:500-1:2000

IHC-P: 1:100-1:300

Validations

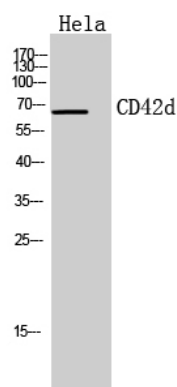


Fig1:: Western Blot analysis of HeLa cells using CD42d Polyclonal Antibody.. Secondary antibody [catalog#: HA1001) was diluted at 1:20000

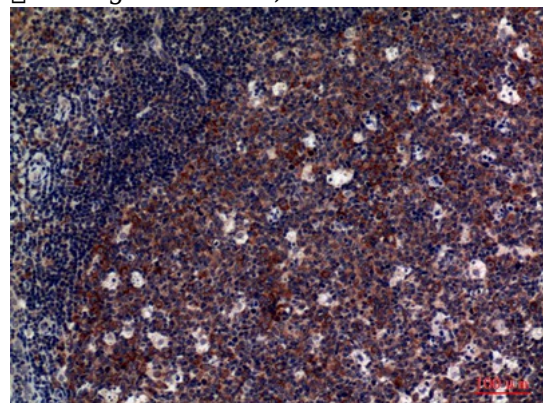


Fig2:: Immunohistochemical analysis of paraffin-embedded human-tonsils, antibody was diluted at 1:100