

# ZFYVE19 antibody



Catalog Number: 117046

## Product name

ZFYVE19 antibody

## Specificity

Human; other species not tested.

## Antibody description

ZFYVE19 Rabbit Polyclonal antibody. Positive IHC detected in human heart tissue. Positive WB detected in HeLa cells, Raji cells. Observed molecular weight by Western-blot: 52 kDa

## Preparation

This antibody was obtained by immunization of ZFYVE19 recombinant protein (Accession Number: BC015738). Purification method: Antigen affinity purified.

## Formulation

PBS with 0.02% sodium azide and 50% glycerol pH 7.3.

## Storage

Store at -20°C. DO NOT ALIQUOT

## Clonality

Polyclonal

## Ig Type

Rabbit IgG

## Applications

ELISA, WB, IHC

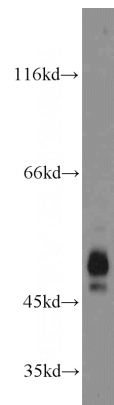
## Dilutions

Recommended Dilution:

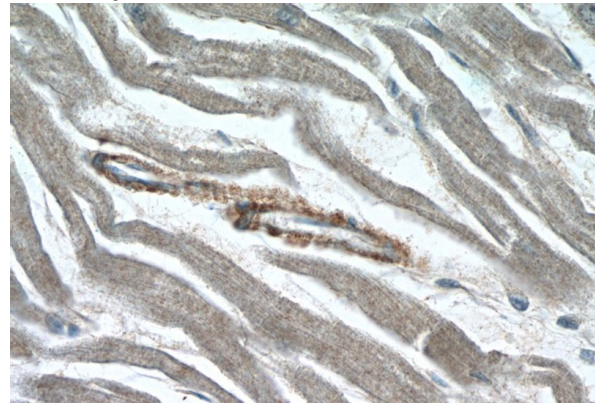
WB: 1:1000-1:10000

IHC: 1:20-1:200

## Validations



HeLa cells were subjected to SDS PAGE followed by western blot with Catalog No:117046(ZFYVE19 antibody) at dilution of 1:2000



Immunohistochemistry of paraffin-embedded human heart slide using Catalog No:117046(ZFYVE19 Antibody) at dilution of 1:50