

**Product name**

GOPC antibody

**Specificity**

human, mouse, rat; other species not tested.

**Antibody description**

GOPC Rabbit Polyclonal antibody. Positive WB detected in K-562 cells, human colon tissue, human kidney tissue, human lung tissue. Positive IHC detected in human pancreas cancer. Observed molecular weight by Western-blot: 50kd

**Preparation**

This antibody was obtained by immunization of GOPC recombinant protein (Accession Number: NM\_001017408). Purification method: Antigen affinity purified.

**Formulation**

PBS with 0.1% sodium azide and 50% glycerol pH 7.3.

**Storage**

Store at -20°C. DO NOT ALIQUOT

**Clonality**

Polyclonal

**Ig Type**

Rabbit IgG

**Applications**

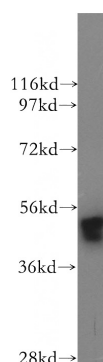
ELISA, WB, IHC

**Dilutions**

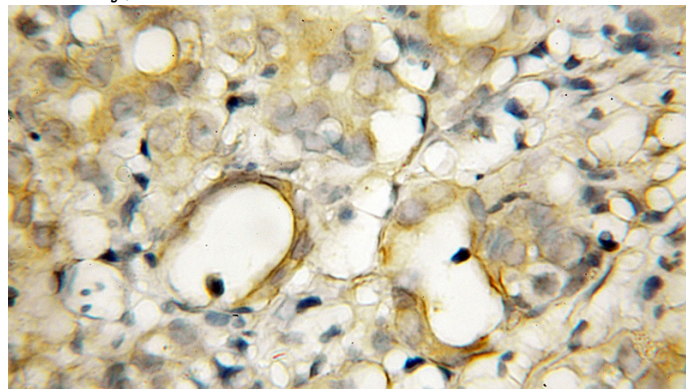
Recommended Dilution:

WB: 1:500-1:5000

IHC: 1:20-1:200

**Validations**

K-562 cells were subjected to SDS PAGE followed by western blot with Catalog No:111046(GOPC antibody) at dilution of 1:800



Immunohistochemical of paraffin-embedded human pancreas cancer using Catalog No:111046(GOPC antibody) at dilution of 1:50 (under 10x lens)