

VEGF Receptor 2 antibody



Catalog Number: 116736

Product name

VEGF Receptor 2 antibody

WB: 1:200-1:2000

IHC: 1:50-1:500

Specificity

Human, Mouse; other species not tested.

Antibody description

VEGF Receptor 2 Rabbit Polyclonal antibody. Positive WB detected in human placenta tissue, mouse heart tissue. Positive IHC detected in human oesophagus cancer tissue, human colon cancer tissue, human lung cancer tissue. Observed molecular weight by Western-blot: 200 kDa

Preparation

This antibody was obtained by immunization of VEGF Receptor 2 recombinant protein (Accession Number: NM_002253). Purification method: Antigen affinity purified.

Formulation

PBS with 0.1% sodium azide and 50% glycerol pH 7.3.

Storage

Store at -20°C. DO NOT ALIQUOT

Clonality

Polyclonal

Ig Type

Rabbit IgG

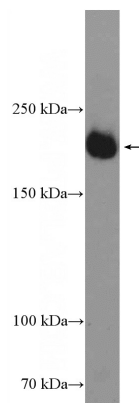
Applications

ELISA, IHC, WB

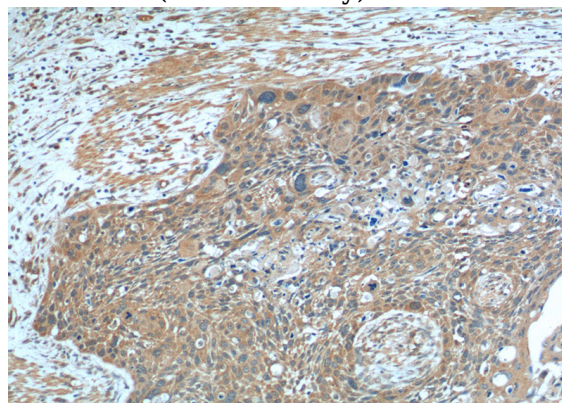
Dilutions

Recommended Dilution:

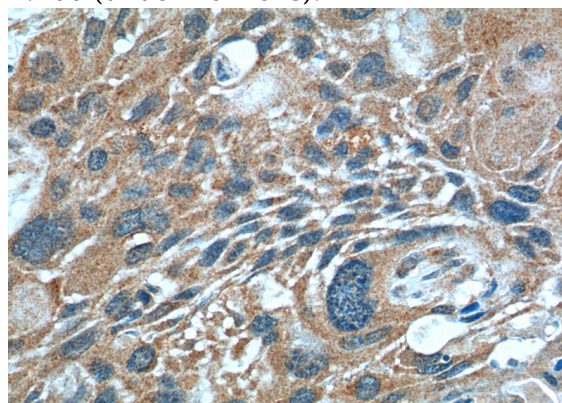
Validations



human placenta tissue were subjected to SDS PAGE followed by western blot with Catalog No:116736(KDR Antibody) at dilution of 1:600



Immunohistochemistry of paraffin-embedded human oesophagus cancer tissue slide using Catalog No:116736(KDR Antibody) at dilution of 1:200 (under 10x lens).



Immunohistochemistry of paraffin-embedded

VEGF Receptor 2 antibody



Catalog Number: 116736

human oesophagus cancer tissue slide using

Catalog No:116736(KDR Antibody) at dilution of
1:200 (under 40x lens).