

Anti-TREM2 antibody



Catalog Number: 175736

Product name

Anti-TREM2 antibody

Specificity

Human, Mouse, Rat, Dog, Pig, Cow, Horse

Antibody description

Rabbit polyclonal antibody to TREM2

Preparation

This antigen of this antibody was klh conjugated synthetic peptide derived from human trem2 1-100/230

Formulation

Liquid, 0.01M TBS(pH7.4) with 1% BSA, 0.03% Proclin300 and 50% Glycerol.

Storage

Store at -20°C for one year. Avoid repeated freeze/thaw cycles.

Clonality

Polyclonal

Ig Type

Rabbit IgG

Applications

WB, IHC-P

Dilutions

WB:1:500-2000

IHC-P:1:400-800

Validations

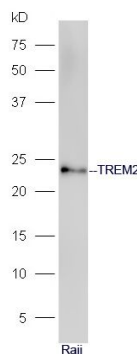
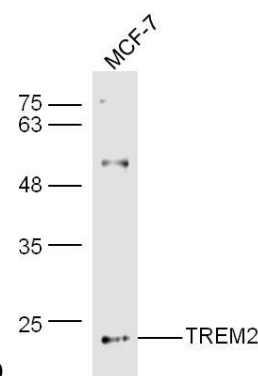


Fig1: Sample: Raji Cell lysate at 30ug;; Primary: Anti-TREM2 at 1:300 dilution;; Secondary: HRP conjugated Goat-Anti-rabbit IgG(bs-0295G-HRP) at 1: 5000 dilution;; Predicted band size: 23 kD;



Observed band size: 23 kD

Fig2: Sample;; MCF-7 Cell (Human) Lysate at 30 ug; Primary: Anti-TREM2 at 1/300 dilution; Secondary: IRDye800CW Goat Anti-Rabbit IgG at 1/20000 dilution; Predicted band size: 23 kD; Observed band size: 23 kD

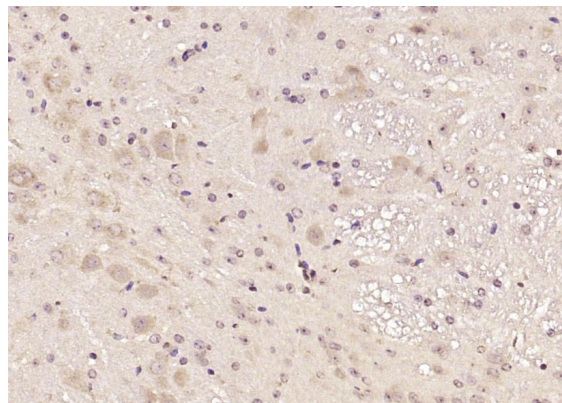
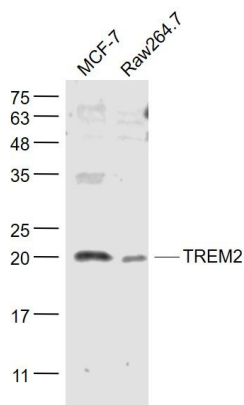


Fig3: Paraformaldehyde-fixed, paraffin embedded (mouse brain); Antigen retrieval by boiling in sodium citrate buffer (pH6.0) for 15min; Block endogenous peroxidase by 3% hydrogen peroxide

Catalog Number: 175736

for 20 minutes; Blocking buffer (normal goat serum) at 37°C for 30min; Antibody incubation with (TREM2) Polyclonal Antibody, Unconjugated at 1:200 overnight at 4°C, followed by operating according to SP Kit(Rabbit) (sp-0023)



instructions and DAB staining.

Fig4: Sample:; MCF-7(Human) Cell Lysate at 30 ug; Raw264.7(Mouse) Cell Lysate at 30 ug; Primary: Anti- TREM2 at 1/1000 dilution; Secondary: IRDye800CW Goat Anti-Rabbit IgG at 1/20000 dilution; Predicted band size: 23 kD;

Observed band size: 20 kD

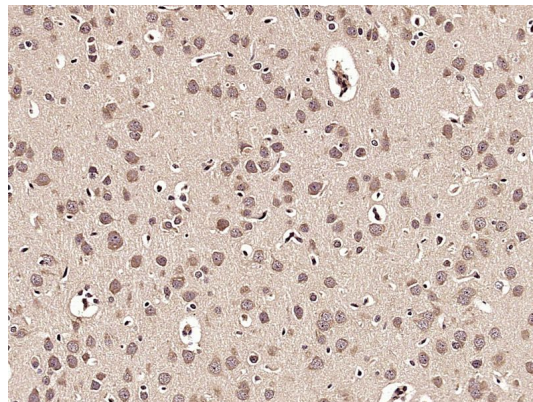


Fig5: Paraformaldehyde-fixed, paraffin embedded (Rat brain); Antigen retrieval by microwave in sodium citrate buffer (pH6.0) ; Block endogenous peroxidase by 3% hydrogen peroxide for 30 minutes; Blocking buffer (3% BSA) at RT for 30min; Antibody incubation with (TREM2) Polyclonal Antibody, Unconjugated at 1:400 overnight at 4°C, followed by conjugation to the secondary antibody (labeled with HRP) and DAB staining.