

# Human EPHA3/Eph Receptor A3 (His Tag) recombinant protein



Catalog Number: 504736

## General Information

### Protein Construction

A DNA sequence encoding the human EPHA3 (Met1-Gln541) was expressed with a polyhistidine tag at the C-terminus.

### Organism

Human

### Expression Host

Human Cells

## QC Testing

### Activity

Measured by its binding ability in a functional ELISA.

Immobilized human EPHA3-His at 10 µg/ml (100 µl/well) can bind human EphrinA5-Fc (Cat:504531), The EC<sub>50</sub> of human EphrinA5-Fc (Cat:504531) is 6.2-14.6 ng/ml.

### Purity

> 95 % as determined by SDS-PAGE

### Endotoxin

< 1.0 EU per µg of the protein as determined by the LAL method

### Stability

Samples are stable for up to twelve months from date of receipt at -70°C

### Predicted N terminal

Glu 21

## Molecular Mass

The recombinant human EPHA3 consists of 532 amino acids and predicts a molecular mass of 60.3 KDa. It migrates as an approximately 65-70 KDa band in SDS-PAGE under reducing conditions.

## Formulation

Lyophilized from sterile PBS, pH 7.4

1. 5 % trehalose and mannitol are added as protectants before lyophilization.
2. Please contact us for any concerns or special requirements.

## Usage Guide

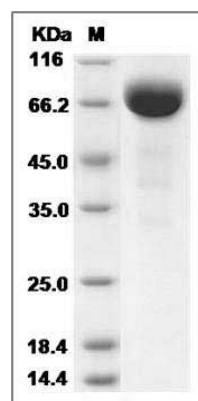
### Storage

Store it under sterile conditions at -20°C to -80°C. It is recommended that the protein be aliquoted for optimal storage. Avoid repeated freeze-thaw cycles.

### Reconstitution

Adding sterile water, prepare a stock solution of 0.25 mg/ml. Concentration is measured by UV-Vis.

## SDS-PAGE



Human EphA3 Protein (His Tag) SDS-PAGE