

Acetyl-Histone H2B-K15 pAb



Catalog Number: 162736

Product name

Acetyl-Histone H2B-K15 pAb

Specificity

Human, Mouse, Rat, Other (Wide Range)

Antibody description

Polyclonal antibody to Acetyl-Histone H2B-K15

Preparation

Antigen: AA synthetic acetylated peptide corresponding to residues surrounding K15 of human Histone H2B

Formulation

PBS with 0.02% sodium azide, 50% glycerol, pH7.3.

Storage

Store at -20°C. Avoid freeze / thaw cycles.

Clonality

Polyclonal

Ig Type

Rabbit IgG

Applications

WB, IHC, IF, IP

Dilutions

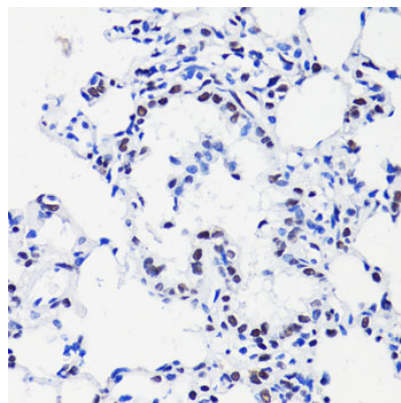
WB 1:500 - 1:2000

IHC 1:50 - 1:200

IF 1:50 - 1:100

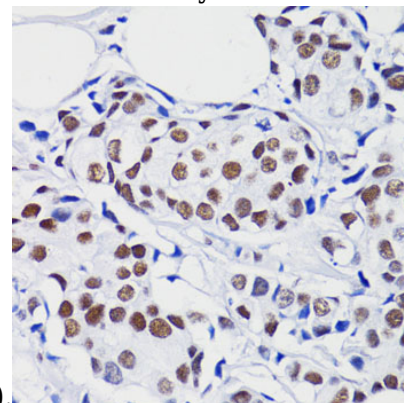
IP 1:50 - 1:200

Validations



Immunohistochemistry - Acetyl-Histone H2B-K15 pAb

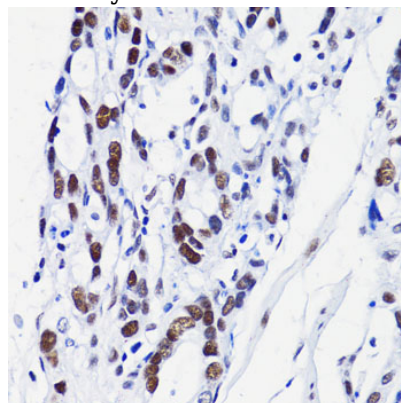
Immunohistochemistry of paraffin-embedded rat lung using H2B K15ac antibody at dilution of



1:100 (40x lens).

Immunohistochemistry - Acetyl-Histone H2B-K15 pAb

Immunohistochemistry of paraffin-embedded human mammary cancer using H2B K15ac antibody at dilution of 1:100 (40x lens).



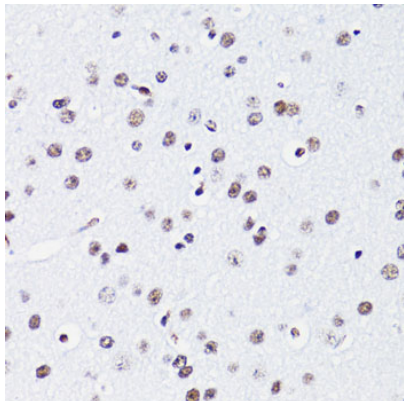
Immunohistochemistry - Acetyl-Histone H2B-K15 pAb

Acetyl-Histone H2B-K15 pAb



Catalog Number: 162736

Immunohistochemistry of paraffin-embedded human gastric cancer using H2B K15ac antibody at dilution of 1:100 (40x lens).



Immunohistochemistry - Acetyl-Histone H2B-K15 pAb

Immunohistochemistry of paraffin-embedded mouse brain using H2B K15ac antibody at dilution of 1:100 (40x lens).