

# Human CCL13/MCP-4 (His Tag) recombinant protein



Catalog Number: 502336

## General Information

### Gene Name Synonym

CK-beta-10; Monocyte chemoattractant protein 4; Monocyte chemotactic protein 4; NCC-1; Small-inducible cytokine A13; C-C motif chemokine 13, long chain; C-C motif chemokine 13, medium chain; C-C motif chemokine 13, short chain

### Protein Construction

A DNA sequence encoding human CCL13 (NP\_005399.1) (Gln24-Thr98) was expressed with a polyhistidine tag at the C-terminus.

### Organism

Human

### Expression Host

Yeast

## QC Testing

### Purity

> 95 % as determined by SDS-PAGE

### Endotoxin

Please contact us for more information.

### Stability

Samples are stable for up to twelve months from date of receipt at -70°C

### Predicted N terminal

Gln 24

### Molecular Mass

The recombinant human CCL13 consists of 85 amino acids and predicts a molecular mass of 10 KDa. It migrates as an approximately 14 KDa band in SDS-PAGE under reducing conditions.

### Formulation

Lyophilized from sterile PBS, pH 7.4.

1. 5 % trehalose and mannitol are added as protectants before lyophilization.
2. Please contact us for any concerns or special requirements.

## Usage Guide

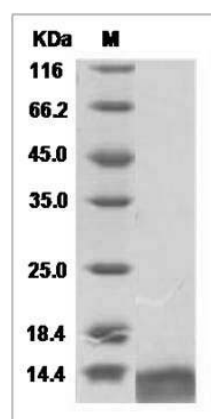
### Storage

Store it under sterile conditions at -20°C to -80°C. It is recommended that the protein be aliquoted for optimal storage. Avoid repeated freeze-thaw cycles.

### Reconstitution

Adding sterile water, prepare a stock solution of 0.25 mg/ml. Concentration is measured by UV-Vis.

### SDS-PAGE



Human CCL13 / MCP-4 Protein (His Tag) SDS-PAGE