

ZNF446 Polyclonal Antibody



Catalog Number: 162336

Product name

ZNF446 Polyclonal Antibody

Specificity

Human, Mouse, Rat

Antibody description

Polyclonal antibody to ZNF446

Preparation

Antigen: Recombinant fusion protein containing a sequence corresponding to amino acids 1-270 of human ZNF446 (NP_060378.1).

Formulation

PBS with 0.02% sodium azide, 50% glycerol, pH7.3.

Storage

Store at -20°C. Avoid freeze / thaw cycles.

Clonality

Polyclonal

Ig Type

Rabbit IgG

Applications

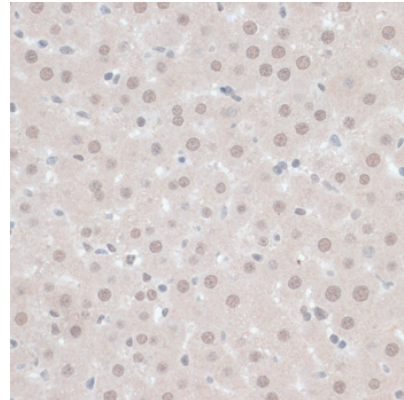
IHC, IF

Dilutions

IHC 1:50 - 1:200

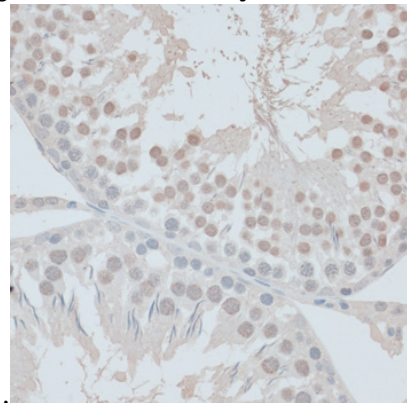
IF 1:50 - 1:200

Validations



Immunohistochemistry - ZNF446 Polyclonal Antibody

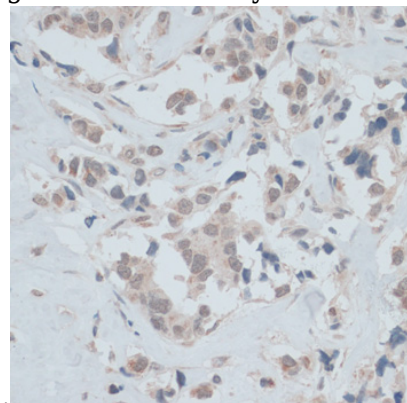
Immunohistochemistry of paraffin-embedded rat liver using ZNF446 antibody at dilution of 1:100



(40x lens).

Immunohistochemistry - ZNF446 Polyclonal Antibody

Immunohistochemistry of paraffin-embedded rat testis using ZNF446 antibody at dilution of 1:100



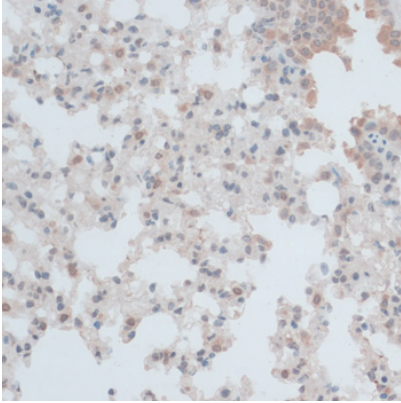
(40x lens).

Immunohistochemistry - ZNF446 Polyclonal Antibody

ZNF446 Polyclonal Antibody

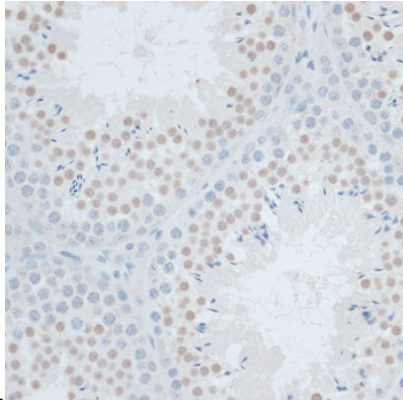
Catalog Number: 162336

Immunohistochemistry of paraffin-embedded human breast cancer using ZNF446 antibody at dilution of 1:100 (40x lens).



Immunohistochemistry - ZNF446 Polyclonal Antibody

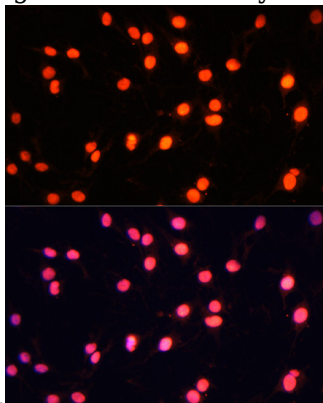
Immunohistochemistry of paraffin-embedded mouse lung using ZNF446 antibody at dilution of



1:100 (40x lens).

Immunohistochemistry - ZNF446 Polyclonal Antibody

Immunohistochemistry of paraffin-embedded mouse testis using ZNF446 antibody at dilution of

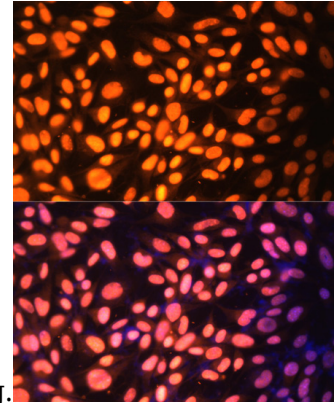


1:100 (40x lens).

Immunofluorescence - ZNF446 Polyclonal

Antibody

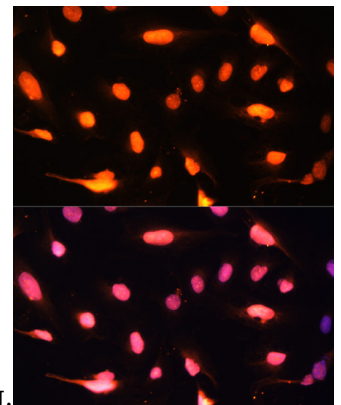
Immunofluorescence analysis of C6 cells using ZNF446 antibody at dilution of 1:100. Blue: DAPI



for nuclear staining.

Immunofluorescence - ZNF446 Polyclonal Antibody

Immunofluorescence analysis of NIH-3T3 cells using ZNF446 antibody at dilution of 1:100. Blue:



DAPI for nuclear staining.

Immunofluorescence - ZNF446 Polyclonal Antibody

Immunofluorescence analysis of U-2 OS cells using ZNF446 antibody at dilution of 1:100. Blue: DAPI for nuclear staining.