

Anti-SMARCA2/BRM Rabbit antibody



Catalog Number: 167636

Product name

Anti-SMARCA2/BRM Rabbit antibody

Specificity

Human, Mouse, Rat

Antibody description

SMARCA2/BRM Rabbit monoclonal antibody

Preparation

Antigen: A synthetic peptide of human SMARCA2/BRM

Formulation

50nM Tris-Glycine(pH 7.4), 0.15M NaCl, 40%Glycerol, 0.01% sodium azide and 0.05% BSA

Storage

Store at 4°C short term. Store at -20°C long term. Avoid freeze / thaw cycle.

Clonality

Monoclonal

Ig Type

Rabbit IgG

Applications

WB, IHC-P, ICC/IF, FC

Dilutions

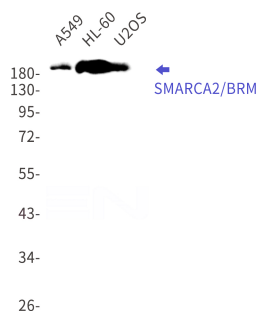
WB: 1/1000

IHC: 1/200

ICC/IF: 1/20

FC: 1/50

Validations



Western blot detection of SMARCA2/BRM in A549,HL-60,U2OS cell lysates using SMARCA2/BRM Rabbit mAb(1:1000 diluted).Predicted band size:181kDa.Observed band size:190kDa.