

# UQCRC2 antibody



Catalog Number: 116636

## Product name

UQCRC2 antibody

Recommended Dilution:

WB: 1:500-1:5000

## Specificity

Human, Mouse, Rat; other species not tested.

IP: 1:500-1:5000

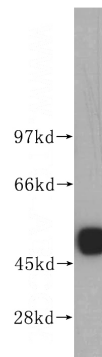
IHC: 1:20-1:200

## Antibody description

UQCRC2 Rabbit Polyclonal antibody. Positive IF detected in HepG2 cells. Positive IHC detected in human colon cancer tissue. Positive FC detected in HepG2 cells. Positive IP detected in mouse brain tissue. Positive WB detected in mouse brain tissue, human colon tissue, mouse colon tissue, mouse heart tissue, mouse placenta tissue, mouse skeletal muscle tissue, SGC-7901 cells. Observed molecular weight by Western-blot: 48kd

IF: 1:20-1:200

## Validations



## Preparation

This antibody was obtained by immunization of UQCRC2 recombinant protein (Accession Number: NM\_003366). Purification method: Antigen affinity purified.

mouse brain tissue were subjected to SDS PAGE followed by western blot with Catalog No:116636(UQCRC2 antibody) at dilution of 1:500

## Formulation

PBS with 0.02% sodium azide and 50% glycerol pH 7.3.

## Storage

Store at -20°C. DO NOT ALIQUOT

## Clonality

Polyclonal

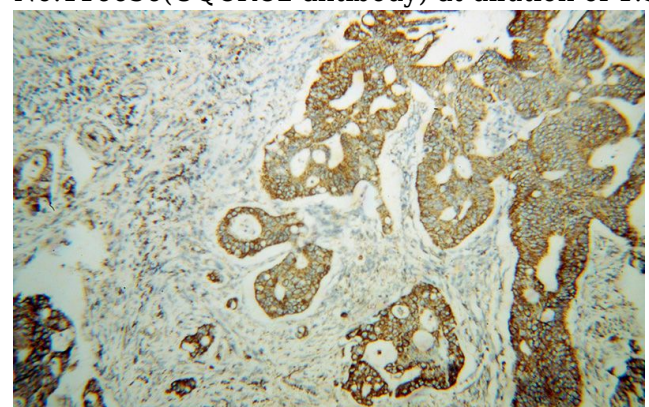
## Ig Type

Rabbit IgG

## Applications

ELISA, WB, IHC, IF, FC, IP

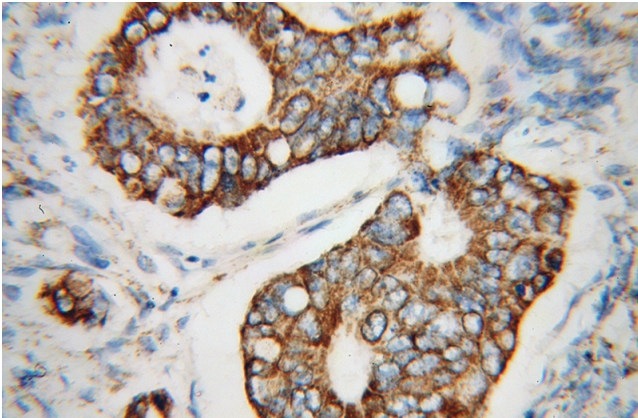
## Dilutions



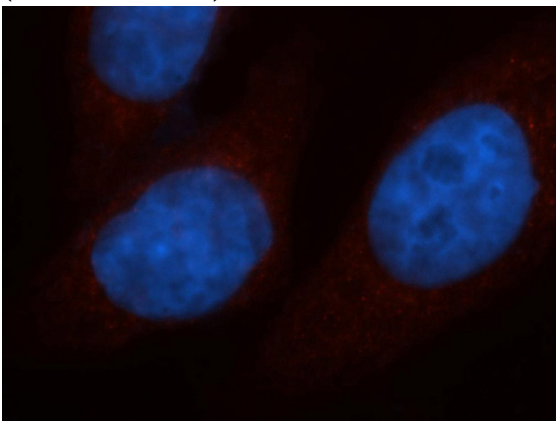
Immunohistochemical of paraffin-embedded human colon cancer using Catalog No:116636(UQCRC2 antibody) at dilution of 1:100 (under 10x lens)

# UQCRC2 antibody

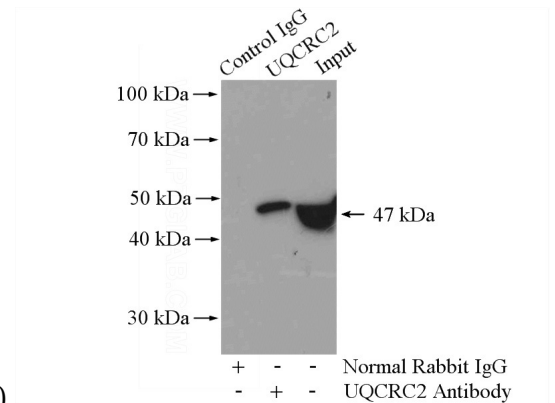
Catalog Number: 116636



Immunohistochemical of paraffin-embedded human colon cancer using Catalog No:116636(UQCRC2 antibody) at dilution of 1:100 (under 40x lens)

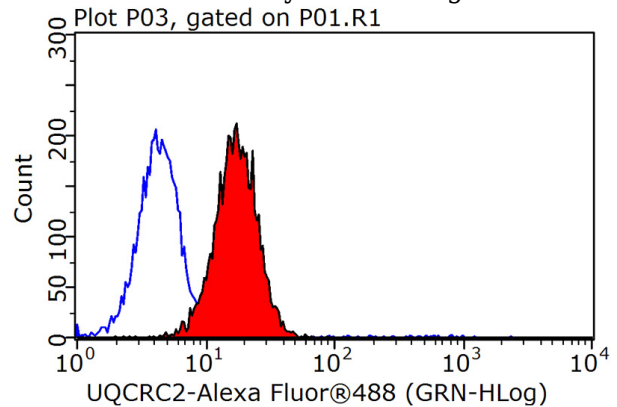


Immunofluorescent analysis of HepG2 cells, using UQCRC2 antibody Catalog No:116636 at 1:50 dilution and Rhodamine-labeled goat anti-rabbit IgG (red). Blue pseudocolor = DAPI (fluorescent



DNA dye).

IP Result of anti-UQCRC2 (IP:Catalog No:116636, 4ug; Detection:Catalog No:116636 1:1000) with mouse brain tissue lysate 4000ug.



1X10<sup>6</sup> HepG2 cells were stained with 0.2ug UQCRC2 antibody (Catalog No:116636, red) and control antibody (blue). Fixed with 90% MeOH blocked with 3% BSA (30 min). Alexa Fluor 488-conjugated AffiniPure Goat Anti-Rabbit IgG(H+L) with dilution 1:1500.