

Anti-MRE11A antibody



Catalog Number: 142636

Product name

Anti-MRE11A antibody

Specificity

Human MRE11A

Antibody description

Rabbit Polyclonal to Human MRE11A

Preparation

Produced in rabbits immunized with a synthetic peptide corresponding to the center region of the Human MRE11A, and purified by antigen affinity chromatography.

Formulation

0.2 μ m filtered solution in PBS

Storage

This antibody can be stored at 2°C-8°C for one month without detectable loss of activity. Antibody products are stable for twelve months from date of receipt when stored at -20°C to -80°C.

Preservative-Free.

Sodium azide is recommended to avoid contamination (final concentration 0.05%-0.1%). It is toxic to cells and should be disposed of properly. Avoid repeated freeze-thaw cycles.

Clonality

Polyclonal

Ig Type

Rabbit IgG

Applications

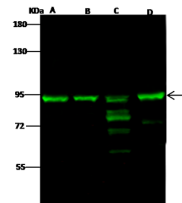
WB, IP

Dilutions

WB: 5-20 μ g/ml

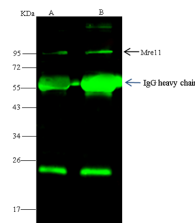
IP: 4-8 μ l/mg of lysate

Validations



Items	Lanes	A	B	C	D
Sample (whole cell lysate)		HeLa	Jurkat	A431	K562
Sample Volume (μ g/lane)		30	30	30	30
Gel		7.5% SDS-PAGE reducing gel			
Recommended Concentration		5-20 μ g/ml			
Secondary Antibody		Dylight 800-labeled Antibody to Rabbit IgG (H+L), at 1:5000 dilution.			
		Developed using Odyssey imaging system.			
Explanation		Predicted band size : 81 kDa Observed band size : 90 kDa			

Human MRE11A Western blot (WB) 14652



Items	Lanes	A	B
Sample (whole cell lysate)		HeLa	Jurkat
Sample quantity		0.5 mg	
IP antibody quantity		4 μ L	
Protein G agarose		15 μ l of 50% Protein G Agarose	
Gel		15% SDS-PAGE reducing gel	
Primary antibody		KLEH-SMCC-SINO2173+KLEH-SMCC-SINO2268 antibody at 10 μ g/ml	
Secondary antibody		Dylight 800-labeled antibody to rabbit IgG (H+L), at 1:5000 dilution	

Human MRE11A Immunoprecipitation(IP) 14653