

IGSF8 antibody

Catalog Number: 111636

Product name

IGSF8 antibody

Specificity

Human, Mouse, Rat; other species not tested.

Antibody description

IGSF8 Rabbit Polyclonal antibody. Positive IP detected in mouse brain tissue. Positive WB detected in K-562 cells, HEK-293 cells, mouse brain tissue. Observed molecular weight by Western-blot: 70kd

Preparation

This antibody was obtained by immunization of IGSF8 recombinant protein (Accession Number: XM_017002837). Purification method: Antigen affinity purified.

Formulation

PBS with 0.02% sodium azide and 50% glycerol pH 7.3.

Storage

Store at -20°C. DO NOT ALIQUOT

Clonality

Polyclonal

Ig Type

Rabbit IgG

Applications

ELISA, WB, IP

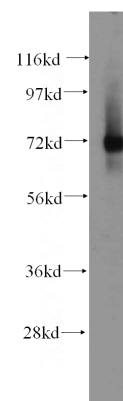
Dilutions

Recommended Dilution:

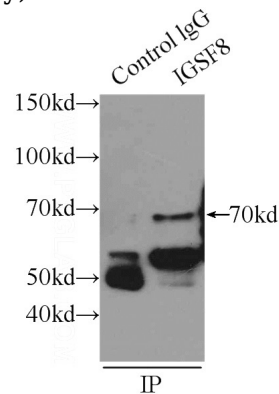
WB: 1:500-1:5000

IP: 1:200-1:2000

Validations



K-562 cells were subjected to SDS PAGE followed by western blot with Catalog No:111636(IGSF8 antibody) at dilution of 1:500



IP Result of anti-IGSF8 (IP:Catalog No:111636, 3ug; Detection:Catalog No:111636 1:500) with mouse brain tissue lysate 5000ug.