

CHMP6 antibody

Catalog Number: 109236

Product name

CHMP6 antibody

Specificity

Human, Mouse, Rat; other species not tested.

Antibody description

CHMP6 Rabbit Polyclonal antibody. Positive WB detected in mouse testis tissue, A375 cells, A431 cells, Jurkat cells, U-937 cells. Positive IP detected in mouse testis tissue. Observed molecular weight by Western-blot: 28-30 kDa

Preparation

This antibody was obtained by immunization of CHMP6 recombinant protein (Accession Number: NM_024591). Purification method: Antigen affinity purified.

Formulation

PBS with 0.02% sodium azide and 50% glycerol pH 7.3.

Storage

Store at -20°C. DO NOT ALIQUOT

Clonality

Polyclonal

Ig Type

Rabbit IgG

Applications

ELISA, WB, IP

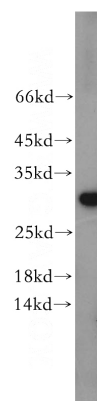
Dilutions

Recommended Dilution:

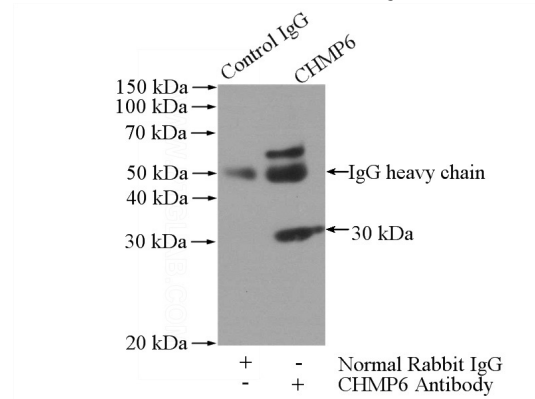
WB: 1:200-1:2000

IP: 1:200-1:2000

Validations



mouse testis tissue were subjected to SDS PAGE followed by western blot with Catalog No:109236(CHMP6 antibody) at dilution of 1:400



IP Result of anti-CHMP6 (IP:Catalog No:109236, 4ug; Detection:Catalog No:109236 1:500) with mouse testis tissue lysate 2400ug.