

# SIPA1 antibody



Catalog Number: 115236

---

## Product name

SIPA1 antibody

## Specificity

human, mouse, rat; other species not tested.

## Antibody description

SIPA1 Rabbit Polyclonal antibody. Positive WB detected in HT-1080 cells, HeLa cells. Observed molecular weight by Western-blot: 130kd

## Preparation

This antibody was obtained by immunization of SIPA1 recombinant protein (Accession Number: XM\_047427428). Purification method: Antigen affinity purified.

## Formulation

PBS with 0.02% sodium azide and 50% glycerol pH 7.3.

## Storage

Store at -20°C. DO NOT ALIQUOT

## Clonality

Polyclonal

## Ig Type

Rabbit IgG

## Applications

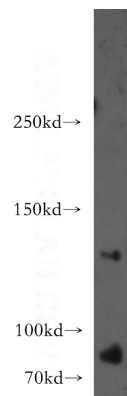
ELISA, WB

## Dilutions

Recommended Dilution:

WB: 1:200-1:2000

## Validations



HT-1080 cells were subjected to SDS PAGE followed by western blot with Catalog No:115236(SIPA1 antibody) at dilution of 1:300