

LIN7A antibody

Catalog Number: 112236

Product name

LIN7A antibody

IP: 1:500-1:5000

IHC: 1:20-1:200

Specificity

Human, Mouse, Rat; other species not tested.

Antibody description

LIN7A Rabbit Polyclonal antibody. Positive IHC detected in mouse brain tissue. Positive WB detected in rat brain tissue. Positive IP detected in mouse brain tissue. Observed molecular weight by Western-blot: 28-30 kDa

Preparation

This antibody was obtained by immunization of LIN7A recombinant protein (Accession Number: NM_004664). Purification method: Antigen affinity purified.

Formulation

PBS with 0.1% sodium azide and 50% glycerol pH 7.3.

Storage

Store at -20°C. DO NOT ALIQUOT

Clonality

Polyclonal

Ig Type

Rabbit IgG

Applications

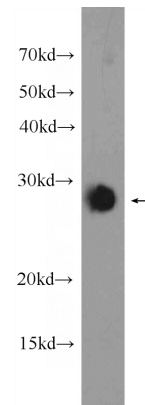
ELISA, WB, IP, IHC

Dilutions

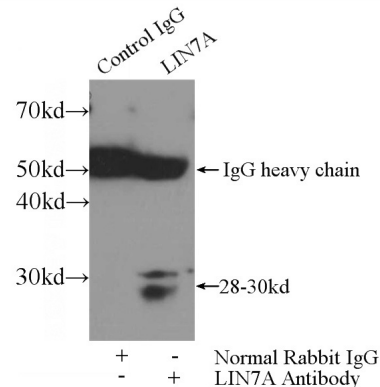
Recommended Dilution:

WB: 1:500-1:5000

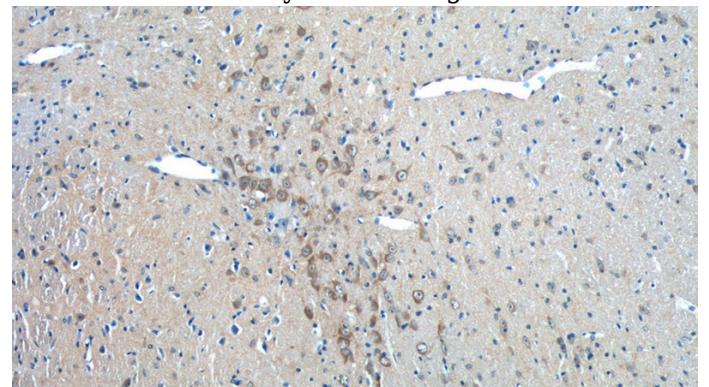
Validations



rat brain tissue were subjected to SDS PAGE followed by western blot with Catalog No:112236(LIN7A Antibody) at dilution of 1:1000



IP Result of anti-LIN7A (IP:Catalog No:112236, 3ug; Detection:Catalog No:112236 1:1000) with mouse brain tissue lysate 4000ug.

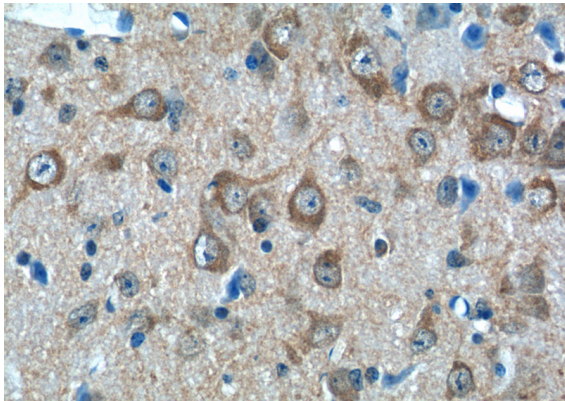


Immunohistochemistry of paraffin-embedded mouse brain tissue slide using Catalog No:112236(LIN7A Antibody) at dilution of 1:200.

LIN7A antibody

Catalog Number: 112236

No:112236(LIN7A Antibody) at dilution of 1:50
(under 10x lens)



Immunohistochemistry of paraffin-embedded
mouse brain tissue slide using Catalog
No:112236(LIN7A Antibody) at dilution of 1:50
(under 40x lens)