

DIABLO antibody



Catalog Number: 109936

Product name

DIABLO antibody

WB: 1:500-1:5000

IP: 1:200-1:2000

Specificity

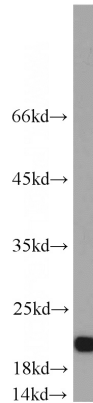
Human, Mouse, Rat; other species not tested.

IHC: 1:20-1:200

Antibody description

DIABLO Rabbit Polyclonal antibody. Positive IP detected in HEK-293 cells. Positive WB detected in HepG2 cells, HEK-293 cells, HeLa cells, Jurkat cells, mouse testis tissue, Sp2/0 cells. Positive IHC detected in human testis tissue, human kidney tissue. Observed molecular weight by Western-blot: 20 kDa

Validations



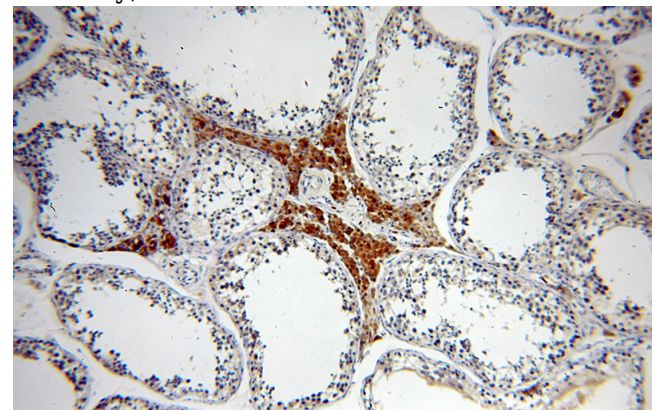
Preparation

This antibody was obtained by immunization of DIABLO recombinant protein (Accession Number: NM_001371333). Purification method: Antigen affinity purified.

HepG2 cells were subjected to SDS PAGE followed by western blot with Catalog No:109936(DIABLO antibody) at dilution of 1:1000

Formulation

PBS with 0.1% sodium azide and 50% glycerol pH 7.3.



Storage

Store at -20°C. DO NOT ALIQUOT

Clonality

Polyclonal

Immunohistochemical of paraffin-embedded human testis using Catalog No:109936(DIABLO antibody) at dilution of 1:50 (under 10x lens)

Ig Type

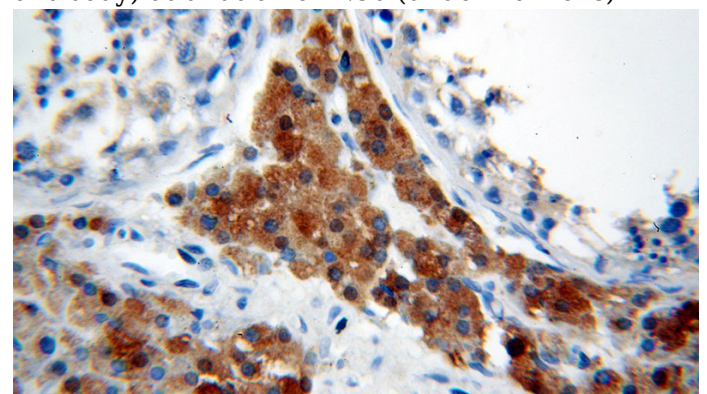
Rabbit IgG

Applications

ELISA, WB, IHC, IP

Dilutions

Recommended Dilution:



DIABLO antibody

Catalog Number: 109936

Immunohistochemical of paraffin-embedded human testis using Catalog No:109936(DIABLO antibody) at dilution of 1:50 (under 40x lens)

IP Result of anti-DIABLO (IP:Catalog No:109936, 4ug; Detection:Catalog No:109936 1:500) with HEK-293 cells lysate 2000ug.

