

Anti-SMN/Gemin 1 Rabbit antibody



Catalog Number: 168936

Product name

Rabbit IgG

Anti-SMN/Gemin 1 Rabbit antibody

Applications

Specificity

WB, IHC-P, IP

Human, Mouse, Rat

Dilutions

Antibody description

WB: 1/1000-1/5000

SMN/Gemin 1 Rabbit monoclonal antibody

IHC: 1/50

Preparation

IP: 1/20-1/50

Antigen: A synthetic peptide of human Gemin 1

Validations

Formulation

50nM Tris-Glycine(pH 7.4), 0.15M NaCl,
40%Glycerol, 0.01% sodium azide and 0.05% BSA.

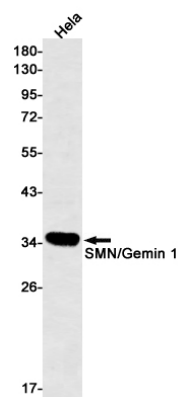
Storage

Store at 4°C short term. Store at -20°C long term.
Avoid freeze / thaw cycle.

Clonality

Monoclonal

Ig Type



Western blot detection of SMN/Gemin 1 in HeLa cell lysates using SMN/Gemin 1 Rabbit mAb(1:500 diluted).Predicted band size:32kDa.Observed band size:35kDa.