

ZCCHC8 antibody



Catalog Number: 116936

Product name

ZCCHC8 antibody

Specificity

Human, Mouse; other species not tested.

Antibody description

ZCCHC8 Rabbit Polyclonal antibody. Positive WB detected in HepG2 cells, HeLa cells, mouse thymus tissue. Positive IF detected in HepG2 cells. Observed molecular weight by Western-blot: 90-100 kDa

Preparation

This antibody was obtained by immunization of ZCCHC8 recombinant protein (Accession Number: NM_017612). Purification method: Antigen affinity purified.

Formulation

PBS with 0.02% sodium azide and 50% glycerol pH 7.3.

Storage

Store at -20°C. DO NOT ALIQUOT

Clonality

Polyclonal

Ig Type

Rabbit IgG

Applications

ELISA, WB, IF

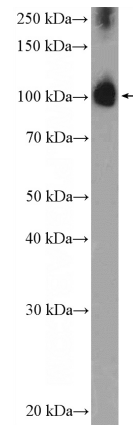
Dilutions

Recommended Dilution:

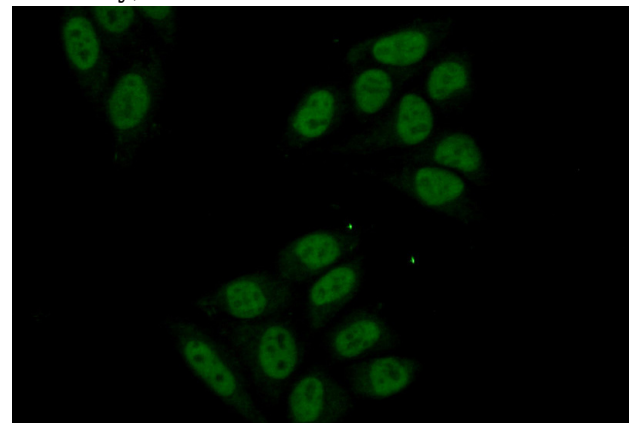
WB: 1:500-1:5000

IF: 1:50-1:500

Validations



HepG2 cells were subjected to SDS PAGE followed by western blot with Catalog No:116936(ZCCHC8 Antibody) at dilution of 1:1000



Immunofluorescent analysis of (10% Formaldehyde) fixed HepG2 cells using Catalog No:116936(ZCCHC8 Antibody) at dilution of 1:50 and Alexa Fluor 488-conjugated AffiniPure Goat Anti-Rabbit IgG(H+L)