

Anti-SOSTDC1 antibody



Catalog Number: 105936

Product name

Anti-SOSTDC1 antibody

Specificity

Human SOSTDC1

Antibody description

Rabbit polyclonal to SOSTDC1

Preparation

Produced in rabbits immunized with a synthetic peptide corresponding to the center region of the Human SOSTDC1, and purified by antigen affinity chromatography.

Formulation

0.2 μ m filtered solution in PBS

Storage

This antibody can be stored at 2°C-8°C for one month without detectable loss of activity. Antibody products are stable for twelve months from date of receipt when stored at -20°C to -80°C.

Preservative-Free.

Sodium azide is recommended to avoid contamination (final concentration 0.05%-0.1%). It is toxic to cells and should be disposed of

properly. Avoid repeated freeze-thaw cycles.

Clonality

Polyclonal

Ig Type

Rabbit IgG

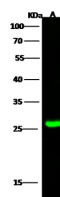
Applications

WB

Dilutions

WB: 5-10 μ g/ml

Validations



Items	Lanes
Sample	A
Sample Volume (μ g/lane)	Mouse liver tissue lysate
Sample Volume (μ g/lane)	30
Gel	13% SDS-PAGE reducing gel
Recommended Concentration	5-10 μ g/ml
Secondary Antibody	Dylight 800-labeled Antibody to Rabbit IgG (H+L), at 1:5000 dilution.
	Developed using Odyssey imaging system.
Explanation	Predicted band size : 23 kDa Observed band size : 26 kDa

SOSTDC1 Antibody, Rabbit PAb, Antigen Affinity Purified, Western blot