

MTERFD3 Polyclonal Antibody



Catalog Number: 165936

Product name

MTERFD3 Polyclonal Antibody

Specificity

Human, Mouse, Rat

Antibody description

Polyclonal antibody to MTERFD3

Preparation

Antigen: Recombinant fusion protein containing a sequence corresponding to amino acids 1-250 of human MTERFD3 (NP_079474.2).

Formulation

PBS with 0.02% sodium azide, 50% glycerol, pH7.3.

Storage

Store at -20°C. Avoid freeze / thaw cycles.

Clonality

Polyclonal

Ig Type

Rabbit IgG

Applications

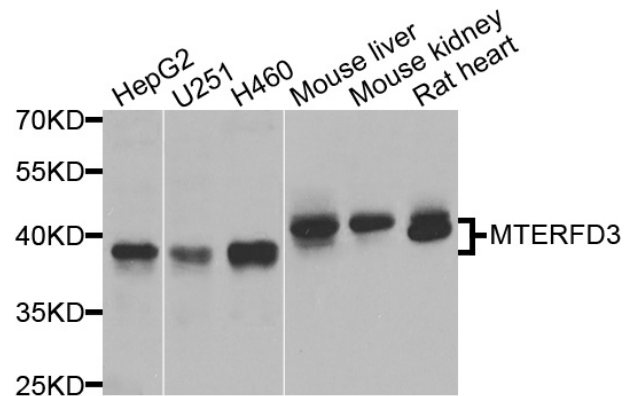
WB, IHC

Dilutions

WB 1:500 - 1:2000

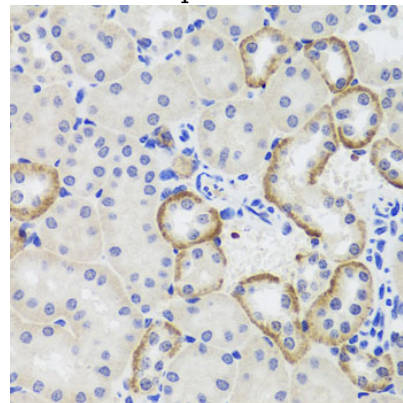
IHC 1:50 - 1:100

Validations



Western blot - MTERFD3 Polyclonal Antibody

Western blot analysis of extracts of various cell lines, using MTERFD3 antibody at 1:1000 dilution. Secondary antibody: HRP Goat Anti-Rabbit IgG (H+L) at 1:10000 dilution. Lysates/proteins: 25ug per lane. Blocking buffer: 3% nonfat dry milk in TBST. Detection: ECL Basic Kit. Exposure time: 10s.



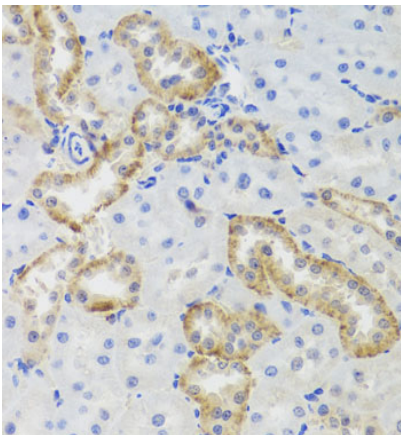
Immunohistochemistry - MTERFD3 Polyclonal Antibody

Immunohistochemistry of paraffin-embedded mouse kidney using MTERFD3 antibody at dilution of 1:100 (40x lens).

MTERFD3 Polyclonal Antibody

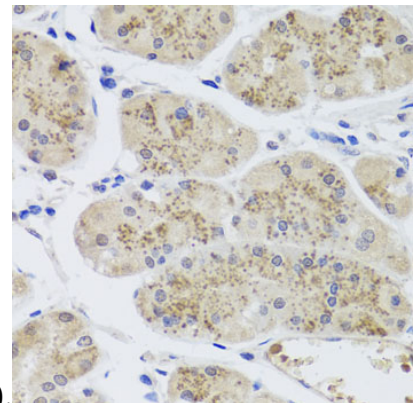


Catalog Number: 165936



Immunohistochemistry - MTERFD3 Polyclonal Antibody

Immunohistochemistry of paraffin-embedded rat kidney using MTERFD3 antibody at dilution of



1:100 (40x lens).

Immunohistochemistry - MTERFD3 Polyclonal Antibody

Immunohistochemistry of paraffin-embedded human stomach using MTERFD3 antibody at dilution of 1:100 (40x lens).