

# Human KIRREL1/NEPH1 (Fc Tag) recombinant protein



Catalog Number: 503936

## General Information

### Gene Name Synonym

Kin of irregular chiasm-like protein 1; Nephrin-like protein 1

### Protein Construction

A DNA sequence encoding the human KIRREL (NP\_060710.3) (Met1-Leu493) was expressed with the Fc region of human IgG1 at the C-terminus.

### Organism

Human

### Expression Host

Human Cells

## QC Testing

### Activity

Measured by the ability of the immobilized protein to support the adhesion of MS1 mouse pancreatic islet endothelial cells.

When cells are added to KIRREL coated plates (15 µg/mL, 100 µL/well), > 20% will adhere specifically after 90 minutes at 37 °C.

### Purity

> 95 % as determined by SDS-PAGE

### Endotoxin

< 1.0 EU per µg of the protein as determined by the LAL method

### Stability

Samples are stable for up to twelve months from date of receipt at -70°C

### Predicted N terminal

Gln 17

### Molecular Mass

The recombinant human KIRREL/Fc comprises 715 amino acids and has a predicted molecular mass of 78.8 kDa. The apparent molecular mass of the protein is approximately 96.1 kDa in SDS-PAGE under reducing conditions.

### Formulation

Lyophilized from sterile PBS, pH 7.4.

1. 5 % trehalose and mannitol are added as protectants before lyophilization.

2. Please contact us for any concerns or special requirements.

## Usage Guide

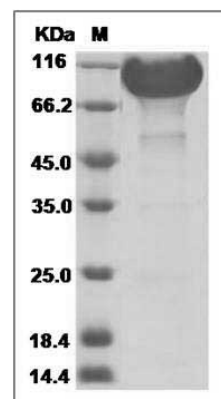
### Storage

Store it under sterile conditions at -20°C to -80°C. It is recommended that the protein be aliquoted for optimal storage. Avoid repeated freeze-thaw cycles.

### Reconstitution

Adding sterile water, prepare a stock solution of 0.25 mg/ml. Concentration is measured by UV-Vis.

### SDS-PAGE



Human KIRREL / NEPH1 / KIRREL1 Protein (Fc Tag) SDS-PAGE