

# MYH7-specific antibody

Catalog Number: 112936

## Product name

MYH7-specific antibody

IP: 1:200-1:1000

IHC: 1:20-1:200

## Specificity

Human, Mouse; other species not tested.

## Antibody description

MYH7-specific Rabbit Polyclonal antibody. Positive WB detected in mouse heart tissue. Positive IP detected in mouse heart tissue. Positive IHC detected in mouse heart tissue, human skeletal muscle tissue. Observed molecular weight by Western-blot: 200-220 kDa

## Preparation

This antibody was obtained by immunization of Peptide (Accession Number: NM\_000257). Purification method: Antigen affinity purified.

## Formulation

PBS with 0.02% sodium azide and 50% glycerol pH 7.3.

## Storage

Store at -20°C. DO NOT ALIQUOT

## Clonality

Polyclonal

## Ig Type

Rabbit IgG

## Applications

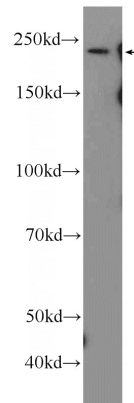
ELISA, IHC, WB, IP

## Dilutions

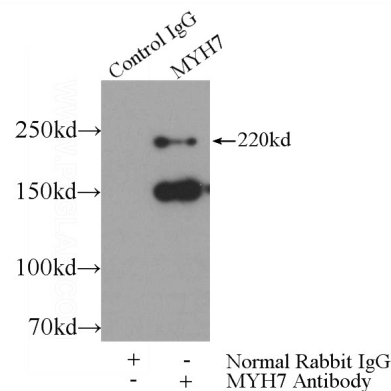
Recommended Dilution:

WB: 1:1000-1:10000

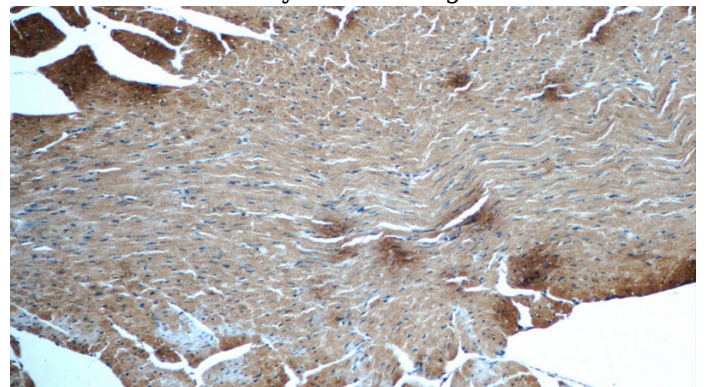
## Validations



mouse heart tissue were subjected to SDS PAGE followed by western blot with Catalog No:112936(MYH7 Antibody) at dilution of 1:2000



IP Result of anti-MYH7 (IP:Catalog No:112936, 5ug; Detection:Catalog No:112936 1:300) with mouse heart tissue lysate 4000ug.



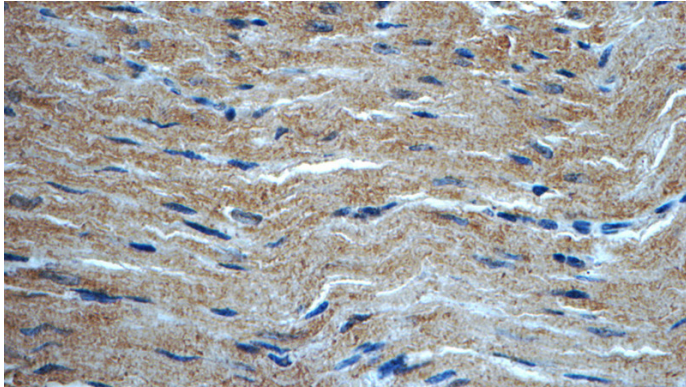
Immunohistochemistry of paraffin-embedded mouse heart tissue slide using Catalog

# MYH7-specific antibody

Catalog Number: 112936

---

No:112936(MYH7 Antibody) at dilution of 1:50  
(under 10x lens)



Immunohistochemistry of paraffin-embedded  
mouse heart tissue slide using Catalog  
No:112936(MYH7 Antibody) at dilution of 1:50  
(under 40x lens)