

Product name

ISCU antibody

Immunogen

[Human ISCU Recombinant protein \(GST tag\)](#)

Specificity

Human, Mouse, Rat; other species not tested.

Antibody description

ISCU Rabbit Polyclonal antibody. Positive IP detected in mouse heart tissue. Positive WB detected in mouse heart tissue, COLO 320 cells, HeLa cells. Positive IHC detected in human lung cancer tissue, human endometrial cancer tissue. Positive IF detected in MCF-7 cells. Observed molecular weight by Western-blot: 14-15 kDa, 18-19 kDa

Preparation

This antibody was obtained by immunization of ISCU recombinant protein (Accession Number: NM_213595). Purification method: Antigen affinity purified.

Formulation

PBS with 0.02% sodium azide and 50% glycerol pH 7.3.

Storage

Store at -20°C. DO NOT ALIQUOT

Clonality

Polyclonal

Ig Type

Rabbit IgG

Applications

ELISA, WB, IHC, IF, IP

Dilutions

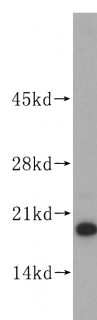
Recommended Dilution:

WB: 1:200-1:2000

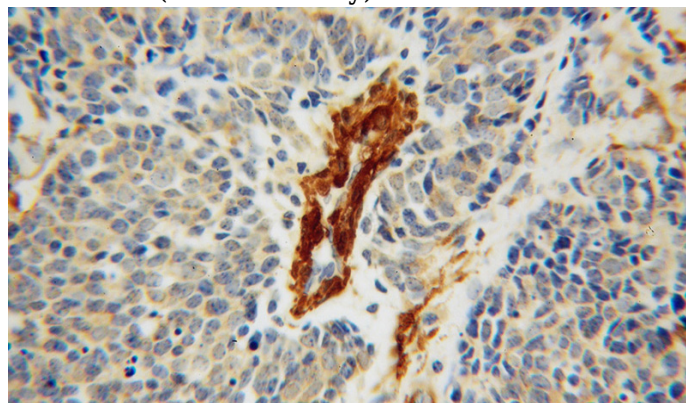
IP: 1:200-1:2000

IHC: 1:20-1:200

IF: 1:20-1:200

Validations

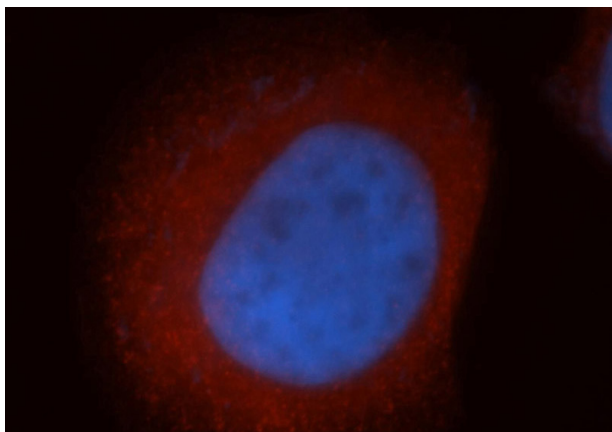
mouse heart tissue were subjected to SDS PAGE followed by western blot with Catalog No:111936(ISCU antibody) at dilution of 1:500



Immunohistochemical of paraffin-embedded human lung cancer using Catalog No:111936(ISCU antibody) at dilution of 1:50 (under 40x lens)

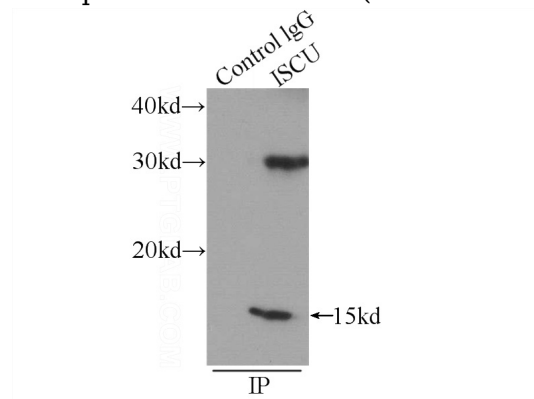
ISCU antibody

Catalog Number: 111936



Immunofluorescent analysis of MCF-7 cells, using ISCU antibody Catalog No:111936 at 1:50 dilution and Rhodamine-labeled goat anti-rabbit IgG (red).

Blue pseudocolor = DAPI (fluorescent DNA dye).



IP Result of anti-ISCU (IP:Catalog No:111936, 3ug; Detection:Catalog No:111936 1:500) with mouse heart tissue lysate 4000ug.