

BTBD16 antibody

Catalog Number: 108536

Product name

BTBD16 antibody

Specificity

Human, Mouse; other species not tested.

Antibody description

BTBD16 Rabbit Polyclonal antibody. Positive WB detected in mouse testis tissue. Positive IHC detected in human kidney tissue, human testis tissue. Observed molecular weight by Western-blot: 60 kDa

Preparation

This antibody was obtained by immunization of BTBD16 recombinant protein (Accession Number: XM_017015636). Purification method: Antigen affinity purified.

Formulation

PBS with 0.1% sodium azide and 50% glycerol pH 7.3.

Storage

Store at -20°C. DO NOT ALIQUOT

Clonality

Polyclonal

Ig Type

Rabbit IgG

Applications

ELISA, WB, IHC

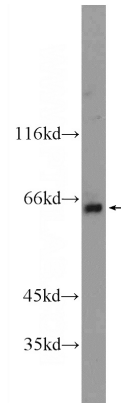
Dilutions

Recommended Dilution:

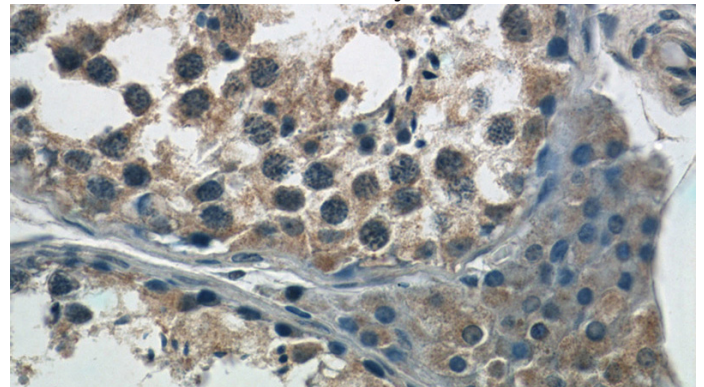
WB: 1:200-1:1000

IHC: 1:20-1:200

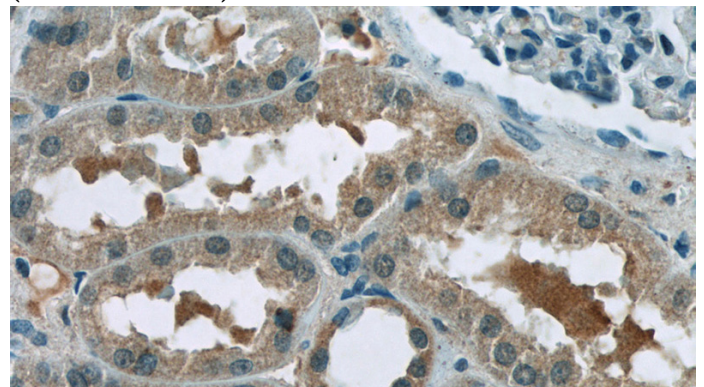
Validations



mouse testis tissue were subjected to SDS PAGE followed by western blot with Catalog No:108536(BTBD16 Antibody) at dilution of 1:300



Immunohistochemistry of paraffin-embedded human testis tissue slide using Catalog No:108536(BTBD16 Antibody) at dilution of 1:50 (under 40x lens)



Immunohistochemistry of paraffin-embedded human kidney tissue slide using Catalog No:108536(BTBD16 Antibody) at dilution of 1:50

BTBD16 antibody



Catalog Number: 108536

(under 40x lens)