

# SPAG8 antibody



Catalog Number: 115536

## Product name

SPAG8 antibody

WB: 1:500-1:5000

IP: 1:200-1:2000

## Specificity

Human, Mouse; other species not tested.

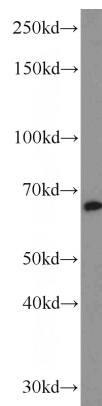
IHC: 1:20-1:200

IF: 1:50-1:500

## Antibody description

SPAG8 Rabbit Polyclonal antibody. Positive IF detected in PC-3 cells. Positive IHC detected in human prostate cancer tissue. Positive WB detected in PC-3 cells, DU 145 cells, human testis tissue, mouse testis tissue. Positive IP detected in mouse testis tissue. Observed molecular weight by Western-blot: 56-65 kDa

## Validations



## Preparation

This antibody was obtained by immunization of SPAG8 recombinant protein (Accession Number: NM\_172312). Purification method: Antigen affinity purified.

PC-3 cells were subjected to SDS PAGE followed by western blot with Catalog No:115536(SPAG8 antibody) at dilution of 1:1000

## Formulation

PBS with 0.02% sodium azide and 50% glycerol pH 7.3.

## Storage

Store at -20°C. DO NOT ALIQUOT

## Clonality

Polyclonal

## Ig Type

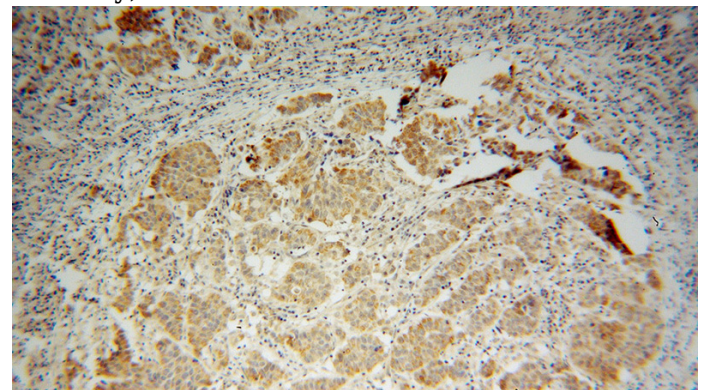
Rabbit IgG

## Applications

ELISA, WB, IHC, IP, IF

## Dilutions

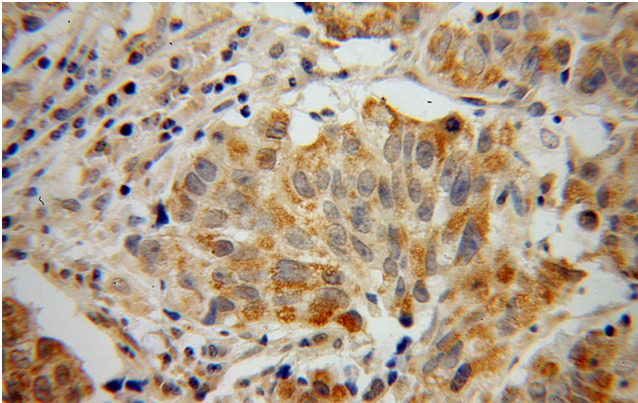
Recommended Dilution:



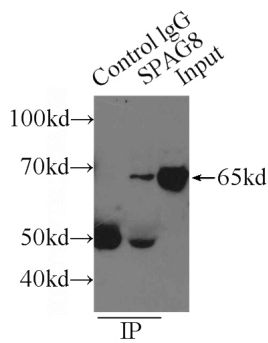
Immunohistochemical of paraffin-embedded human prostate cancer using Catalog No:115536(SPAG8 antibody) at dilution of 1:100 (under 10x lens)

# SPAG8 antibody

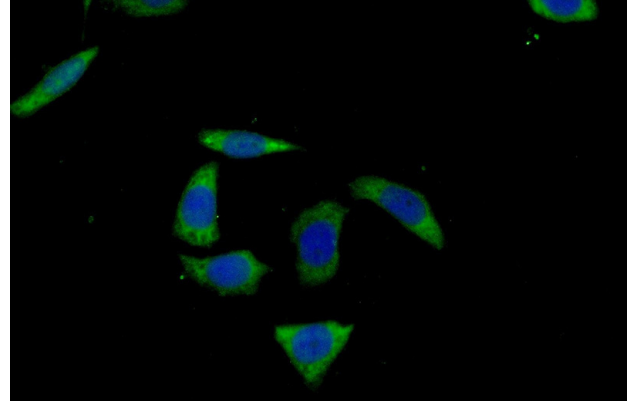
Catalog Number: 115536



Immunohistochemical of paraffin-embedded human prostate cancer using Catalog No:115536(SPAG8 antibody) at dilution of 1:100 (under 40x lens)



IP Result of anti-SPAG8 (IP:Catalog No:115536, 3ug; Detection:Catalog No:115536 1:500) with mouse testis tissue lysate 6000ug.



Immunofluorescent analysis of (-20oc Ethanol) fixed PC-3 cells using Catalog No:115536(SPAG8 Antibody) at dilution of 1:50 and Alexa Fluor 488-conjugated AffiniPure Goat Anti-Rabbit IgG(H+L)