

General Information

Gene Name Synonym

CD300 antigen-like family member A; Leukocyte mono-Ig-like receptor 1; Mast cell-derived paired immunoglobulin-like receptor 1; Myeloid-associated immunoglobulin-like receptor 1

Protein Construction

A DNA sequence encoding the mouse CD300A (Q6SJQ0-1) (Met 1-Arg 183) extracellular domain was fused with the Fc region of human IgG1 at the C-terminus.

Organism

Mouse

Expression Host

Human Cells

QC Testing

Purity

> 92 % as determined by SDS-PAGE

Endotoxin

< 1.0 EU per μg of the protein as determined by the LAL method

Stability

Samples are stable for up to twelve months from date of receipt at -70°C

Predicted N terminal

Leu 28

Molecular Mass

The recombinant mouse CD300A/Fc is a disulfide-linked homodimer. The reduced monomer comprises 397 amino acids and has a predicted molecular mass of 44.2 kDa. The apparent molecular mass of rmCD300A/Fc monomer is approximately 55-65 kDa in SDS-PAGE under reducing conditions.

Formulation

Lyophilized from sterile PBS, pH 7.4

1. 5 % trehalose and mannitol are added as protectants before lyophilization.

2. Please contact us for any concerns or special requirements.

Usage Guide

Storage

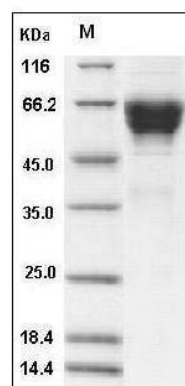
Store it under sterile conditions at -20°C to -80°C .

It is recommended that the protein be aliquoted for optimal storage. Avoid repeated freeze-thaw cycles.

Reconstitution

Adding sterile water, prepare a stock solution of 0.25 mg/ml. Concentration is measured by UV-Vis.

SDS-PAGE



Mouse CD300A Protein (Fc Tag) SDS-PAGE