

# MEGF10 Polyclonal Antibody

Catalog Number: 160536

## Product name

MEGF10 Polyclonal Antibody

## Specificity

Human, Mouse, Rat

## Antibody description

Polyclonal antibody to MEGF10

## Preparation

Antigen: Recombinant fusion protein containing a sequence corresponding to amino acids 26-160 of human MEGF10 (NP\_001295048.1).

## Formulation

PBS with 0.02% sodium azide, 50% glycerol, pH7.3.

## Storage

Store at -20°C. Avoid freeze / thaw cycles.

## Clonality

Polyclonal

## Ig Type

Rabbit IgG

## Applications

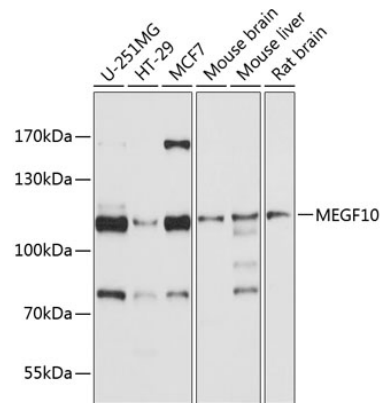
WB, IF

## Dilutions

WB 1:500 - 1:2000

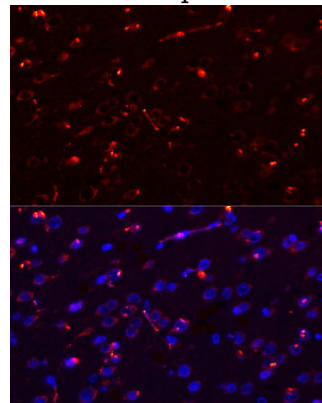
IF 1:50 - 1:200

## Validations



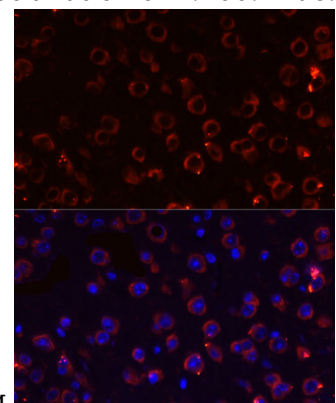
Western blot - MEGF10 Polyclonal Antibody

Western blot analysis of extracts of various cell lines, using MEGF10 antibody at 1:1000 dilution. Secondary antibody: HRP Goat Anti-Rabbit IgG (H+L) at 1:10000 dilution. Lysates/proteins: 25ug per lane. Blocking buffer: 3% nonfat dry milk in TBST. Detection: ECL Basic Kit. Exposure time: 10s.



Immunofluorescence - MEGF10 Polyclonal Antibody

Immunofluorescence analysis of rat brain using MEGF10 antibody at dilution of 1:100. Blue: DAPI



for nuclear staining.

# MEGF10 Polyclonal Antibody



Catalog Number: 160536

---

Immunofluorescence - MEGF10 Polyclonal Antibody

Immunofluorescence analysis of mouse brain using MEGF10 antibody at dilution of 1:100. Blue: DAPI for nuclear staining.