

# Rovalpituzumab reference antibody



Catalog Number: 177136

## Product name

Rovalpituzumab reference antibody

## Specificity

Human DLL3

## Antibody description

Anti-DLL3 Antibody (Rovalpituzumab)

## Preparation

Recombinant expression and purified from CHO cells.

## Formulation

0.1 M Pro-Ac, 20 mM Arg, pH 5.0

## Storage

-80°C for 2 years under sterile conditions; -20°C for 1 year under sterile conditions; Avoid repeated freeze-thaw cycles.

## Clonality

Monoclonal

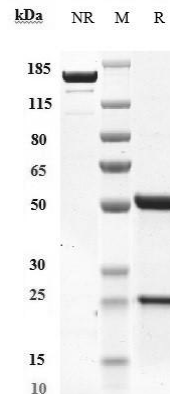
## Ig Type

IgG1

## Applications

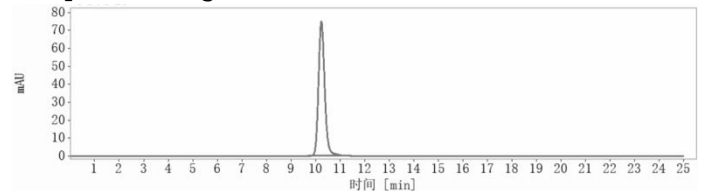
ELISA

## Validations



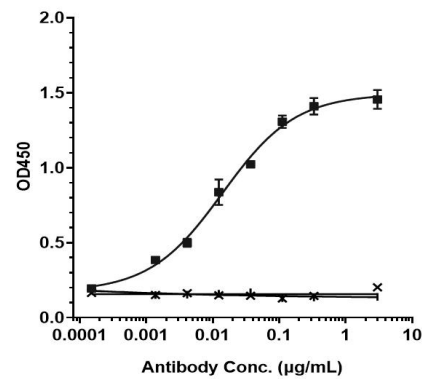
## SDS-PAGE

Anti-DLL3 Antibody (rovalpituzumab) on SDS-PAGE under reducing (R) condition. The purity of the protein is greater than 95%.



## SEC-HPLC

The purity of Anti-DLL3 Antibody (rovalpituzumab) is 98.44%, determined by SEC-



## HPLC.

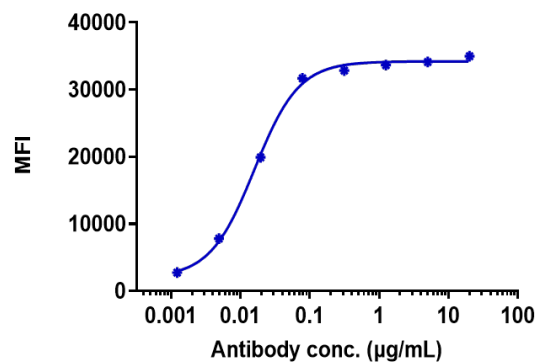
Bioactivity: ELISA

Immobilized human DLL3 His at 2 ug/mL can bind Anti-DLL3 Antibody (rovalpituzumab), EC50=0.01407 ug/mL.

# Rovalpituzumab reference antibody



Catalog Number: 177136



Bioactivity: FACS

Human DLL3 HEK293 cells were stained with Anti-DLL3 Antibody (rovalpituzumab) and negative control protein respectively, washed and then followed by PE and analyzed with FACS, EC50=0.01586 ug/mL.