

Anti-RRM1 Rabbit antibody



Catalog Number: 168836

Product name

Anti-RRM1 Rabbit antibody

Specificity

Human, Mouse, Rat

Antibody description

RRM1 Rabbit monoclonal antibody

Preparation

Antigen: A synthetic peptide of human RRM1

Formulation

50nM Tris-Glycine(pH 7.4), 0.15M NaCl, 40%Glycerol, 0.01% sodium azide and 0.05% BSA.

Storage

Store at 4°C short term. Store at -20°C long term. Avoid freeze / thaw cycle.

Clonality

Monoclonal

Ig Type

Rabbit IgG

Applications

WB, IHC-P, ICC/IF, FC, IP

Dilutions

WB: 1/2000-1/10000

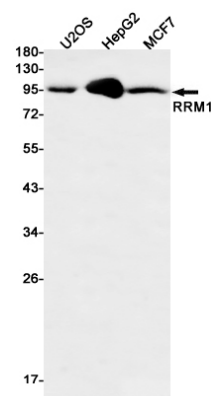
IHC: 1/20-1/50

ICC/IF: 1/20-1/100

FC: 1/20-1/100

IP: 1/20-1/50

Validations



Western blot detection of RRM1 in U2OS, HepG2, MCF7 cell lysates using RRM1 Rabbit mAb(1:500 diluted). Predicted band size: 90kDa. Observed band size: 90kDa.