

SUMO1 antibody



Catalog Number: 115836

Product name

SUMO1 antibody

Specificity

Human,Mouse,Rat; other species not tested.

Antibody description

SUMO1 Rabbit Polyclonal antibody. Positive WB detected in NIH/3T3 cells, mouse spleen tissue. Observed molecular weight by Western-blot: 10-12 kDa,80-90 kDa

Preparation

This antibody was obtained by immunization of SUMO1 recombinant protein (Accession Number: NM_001005781). Purification method: Antigen affinity purified.

Formulation

PBS with 0.1% sodium azide and 50% glycerol pH 7.3.

Storage

Store at -20°C. DO NOT ALIQUOT

Clonality

Polyclonal

Ig Type

Rabbit IgG

Applications

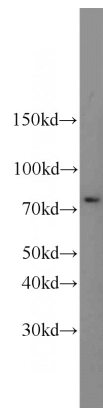
ELISA, WB

Dilutions

Recommended Dilution:

WB: 1:200-1:2000

Validations



NIH/3T3 cells were subjected to SDS PAGE followed by western blot with Catalog No:115836(SUMO1 antibody) at dilution of 1:600