

IRF4 antibody



Catalog Number: 111836

Product name

IRF4 antibody

Recommended Dilution:

WB: 1:500-1:5000

Specificity

Human, Mouse; other species not tested.

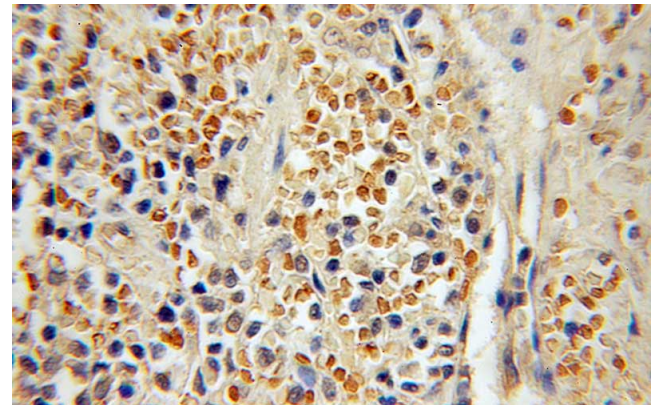
IP: 1:200-1:2000

IHC: 1:20-1:200

Antibody description

IRF4 Rabbit Polyclonal antibody. Positive FC detected in Raji cells. Positive IHC detected in human lymphoma tissue, human tonsillitis tissue. Positive WB detected in mouse spleen tissue, Jurkat cells, mouse lung tissue, mouse thymus tissue, Raji cells, RAW264.7 cells. Positive IP detected in mouse spleen tissue. Observed molecular weight by Western-blot: 50-52 kDa

Validations



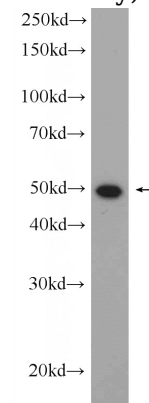
Preparation

This antibody was obtained by immunization of IRF4 recombinant protein (Accession Number: NM_002460). Purification method: Antigen affinity purified.

Immunohistochemical of paraffin-embedded human lymphoma using Catalog No:111836(IRF4 antibody) at dilution of 1:50 (under 25x lens)

Formulation

PBS with 0.1% sodium azide and 50% glycerol pH 7.3.



Storage

Store at -20°C. DO NOT ALIQUOT

mouse spleen tissue were subjected to SDS PAGE followed by western blot with Catalog No:111836(IRF4 Antibody) at dilution of 1:1000

Clonality

Polyclonal

Ig Type

Rabbit IgG

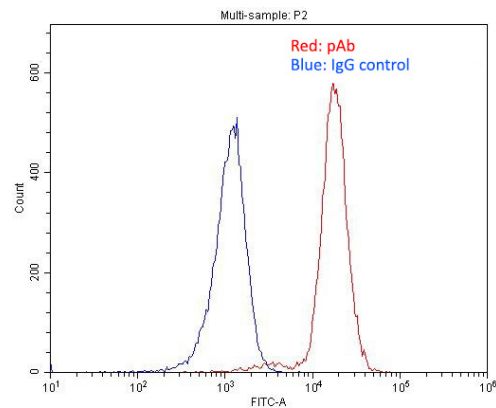
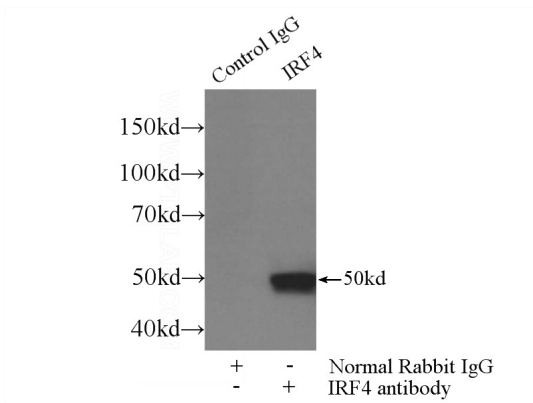
Applications

ELISA, IHC, WB, IP, FC

Dilutions

IRF4 antibody

Catalog Number: 111836



IP Result of anti-IRF4 (IP:Catalog No:111836, 3ug; Detection:Catalog No:111836 1:500) with mouse spleen tissue lysate 4000ug.

1X10⁶ Raji cells were stained with 0.2ug IRF4 antibody (Catalog No:111836, red) and control antibody (blue). Fixed with 4% PFA blocked with 3% BSA (30 min). Alexa Fluor 488-conjugated AffiniPure Goat Anti-Rabbit IgG(H+L) with dilution 1:1500.