

# SMARCE1 antibody

Catalog Number: 115436

## Product name

SMARCE1 antibody

IP: 1:200-1:2000

IHC: 1:20-1:200

## Specificity

Human, Mouse, Rat; other species not tested.

## Antibody description

SMARCE1 Rabbit Polyclonal antibody. Positive IHC detected in human prostate cancer tissue. Positive WB detected in Jurkat cells, HEK-293 cells, HeLa cells, MCF7 cells. Positive IP detected in HEK-293 cells. Observed molecular weight by Western-blot: 50-55kd

## Preparation

This antibody was obtained by immunization of SMARCE1 recombinant protein (Accession Number: NM\_003079). Purification method: Antigen affinity purified.

## Formulation

PBS with 0.1% sodium azide and 50% glycerol pH 7.3.

## Storage

Store at -20°C. DO NOT ALIQUOT

## Clonality

Polyclonal

## Ig Type

Rabbit IgG

## Applications

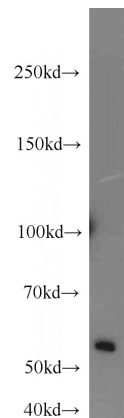
ELISA, WB, IHC, IP

## Dilutions

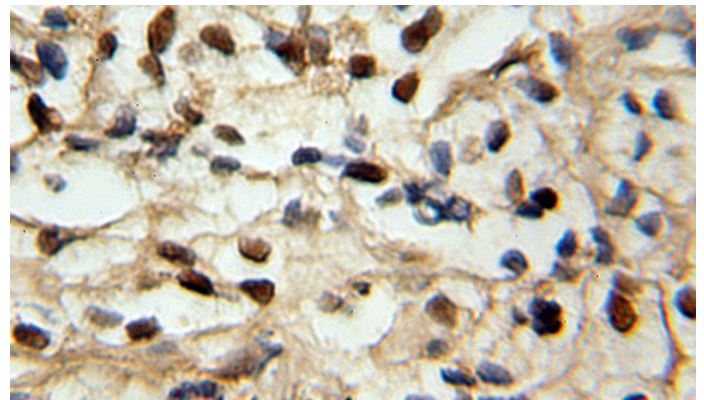
Recommended Dilution:

WB: 1:500-1:5000

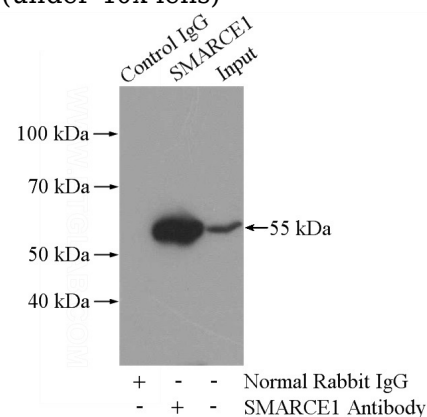
## Validations



Jurkat cells were subjected to SDS PAGE followed by western blot with Catalog No:115436(SMARCE1 antibody) at dilution of 1:1000



Immunohistochemical of paraffin-embedded human prostate cancer using Catalog No:115436(SMARCE1 antibody) at dilution of 1:100 (under 40x lens)



# SMARCE1 antibody



Catalog Number: 115436

---

IP Result of anti-SMARCE1 (IP:Catalog

No:115436, 4ug; Detection:Catalog No:115436  
1:800) with HEK-293 cells lysate 880ug.