

# Anti-GPRC5B Rabbit antibody



Catalog Number: 169036

## Product name

Anti-GPRC5B Rabbit antibody

## Specificity

Human, Mouse, Rat

## Antibody description

GPRC5B Rabbit monoclonal antibody

## Preparation

Antigen: A synthetic peptide of human GPRC5B

## Formulation

Supplied in 50nM Tris-Glycine(pH 7.4), 0.15M NaCl, 40%Glycerol, 0.01% sodium azide and 0.05% BSA.

## Storage

Store at 4°C short term. Aliquot and store at -20°C long term. Avoid freeze / thaw cycle.

## Clonality

Monoclonal

## Ig Type

Rabbit IgG

## Applications

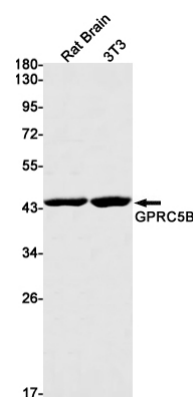
WB, IP

## Dilutions

1:2000-1:10000

1:20

## Validations



Western blot detection of GPRC5B in Rat Brain,3T3 cell lysates using GPRC5B Rabbit mAb(1:1000 diluted).Predicted band size:45kDa.Observed band size:45kDa.